



ULM Warhawks Men's Basketball

University of Louisiana at Monroe



ULM (22-12, 14-6 SBC)
WARHAWKS

Vs.



Mercer (19-15, 12-6 SoCon)
BEARS

Game 35

Monday, March 23 • 6:00 p.m. (CT) • CBI Quarterfinals
Hawkins Arena (3,500) • Macon, Ga.

Television: ESPN3 (Dan Mathews & Kevin Canevari)

Radio: KLIP LA 105.3 FM, Nick White (PXP)

Twitter: @ULM_MBB

ULM Quick Notes

- ULM defeated Eastern Michigan, 71-67 in the CBI First Round. Senior Tylor Ongwae netted a season-high 26 points including a pair of late three-pointers as the Warhawks overcame a 19-0 EMU run in the second half
- The Warhawks won their second postseason game in school history, both at home. The first came over Florida A&M, 87-63 in an NCAA Tournament play-in game on March 2, 1991.
- ULM is the first team from the Sun Belt Conference to ever win a game in the CBI. ULM is making its 10th postseason appearance in program history and the first since 1995-96
- The Warhawks finished in a tie for second-place in the Sun Belt Conference standings after being picked sixth in the SBC Preseason Poll
- ULM notched its 11th 20-win season in school history and the first since 2001-02. The 22 wins are the most since 1992-93
- The Warhawks etched their 39th winning season in school history and their first since 2006-07
- ULM is one of three teams in the nation to not allow 75 points in a single game this season along with Saint Peter's and Baylor. ULM is the only team on the list still playing
- Keith Richard won his second career SBC Coach of the Year award. Ongwae was named to the All-Conference First-Team and junior Majok Deng earned All-Conference Third-Team honors. Ongwae became the first-ever ULM student-athlete to earn All-SBC First-Team accolades. It also marked the first time ULM had two All-SBC players in the same year
- For the second year in a row, the Warhawks doubled both their overall and conference win totals. ULM finished 10-17 (7-11 SBC) last season. ULM's 12-more wins this year than 2013-14 is a top-five biggest turnaround in the country
- The Warhawks posted the most single-season SBC wins in school history with 14
- ULM reached the SBC Semifinals for the first-time in school history. The Warhawks defeated South Alabama, 77-59 in the quarterfinals for the program's first conference tournament win since 2010. They posted the largest margin of victory in conference tournament play since 1997 when they downed Northwestern State, 85-54

ULM MEN'S BASKETBALL SCHEDULE

Sat, Nov. 15	# at UAB	W, 74-65
Mon, Nov. 17	Champion Baptist	W, 106-39
Fri, Nov. 21	# at No. 8 Florida	L, 61-56 (OT)
Wed, Nov. 26	# vs. Coastal Carolina	L, 61-48
Thurs, Nov. 27	# vs. Robert Morris	L, 71-54
Sat, Dec. 6	Louisiana College	W, 83-55
Tues, Dec. 9	Northwestern State	W, 82-74
Sat, Dec. 13	at New Mexico	L, 54-46
Tues, Dec. 16	Central Baptist	W, 78-53
Fri, Dec. 19	LSU-Alexandria	W, 76-71
Sun, Dec. 21	at Samford	L, 64-50
Tues, Dec. 30	at Georgia State*	L, 65-45
Mon, Jan. 5	Arkansas State*	W, 70-61
Thurs, Jan. 8	at UT Arlington*	W, 76-73 (OT)
Sat, Jan. 10	at Texas State*	W, 62-59
Thurs, Jan. 15	Troy*	W, 63-54
Sat, Jan. 17	UALR*	W, 64-52
Mon, Jan. 19	at UL-Lafayette*	W, 57-55
Thurs, Jan. 22	UT Arlington*	L, 61-57
Sat, Jan. 24	Georgia Southern*	L, 57-53
Thurs, Jan. 29	at Troy*	W, 58-55 (OT)
Sat, Jan. 31	South Alabama*	W, 67-61
Thurs, Feb. 5	at UALR*	W, 77-61
Sat, Feb. 7	at Georgia Southern*	W, 71-68 (OT)
Thurs, Feb. 12	UL-Lafayette*	W, 67-55
Sat, Feb. 14	Appalachian State*	W, 69-58
Sat, Feb. 21	at Arkansas State*	L, 70-68
Thurs, Feb. 26	at South Alabama*	W, 75-57
Sat, Feb. 28	at Appalachian State*	L, 66-43
Thurs, March 5	Georgia State*	L, 58-50
Sat, March 7	Texas State*	W, 56-53
Fri, March 13	% vs. South Alabama	W, 77-59
Sat, March 14	% vs. Georgia Southern	L, 44-43
Wed, March 18	\$ Eastern Michigan	W, 71-67
Mon, March 23	\$ at Mercer	6:00 PM

All times Central and subject to change. **Bold** indicates home game;
*-Sun Belt game; %-SBC Tournament; #Battle 4 Atlantis; \$-College Basketball Invitational

We are ULM. Please note that there are only two correct versions of our institution's name, the preferred acronym ULM and the full name, the University of Louisiana at Monroe. Any other reference, including Louisiana-Monroe, UL-Monroe, La.-Monroe, LAM, or simply Monroe, are incorrect.

Media Relations Contacts

Robbie Kleinmuntz (Primary)	Michael Garabedian
Assistant Director	Graduate Assistant
kleinmuntz@ulm.edu	garabemc@warhawks.ulm.edu
O: 318-342-5462	O: 318-342-5461
C: 847-912-5380	C: 305-926-8420



ULM Warhawks Men's Basketball

University of Louisiana at Monroe



Keith Richard

Head Coach

SBC Coach of the Year

Fifth Year at ULM

14th Season Overall

Alma Mater: ULM (1982)

THE RICHARD FILE

COACHING HONORS

- 2015 Sun Belt Coach of the Year
- 1999 Sun Belt Coach of the Year
- Has been part of the coaching staff for seven NCAA Tournament, three NIT and one CBI team

COACHING CAREER

Season	School	Position	Record
1984-85	ULM	Graduate Assistant	17-12
1985-86	ULM	Graduate Assistant	20-10/NCAA
1986-87	Marshall	Assistant Coach	25-6/NCAA
1987-88	Marshall	Assistant Coach	24-8/NIT
1988-89	Marshall	Assistant Coach	15-15
1989-90	ULM	Assistant Coach	22-8/NCAA
1990-91	ULM	Assistant Coach	25-8/NCAA
1991-92	ULM	Assistant Coach	19-10/NCAA
1992-93	ULM	Assistant Coach	26-5/NCAA
1993-94	ULM	Assistant Coach	19-9
1994-95	La. Tech	Assistant Coach	14-13
1995-96	La. Tech	Associate Head Coach	11-17
1996-97	La. Tech	Associate Head Coach	15-14
1997-98	La. Tech	Associate Head Coach	12-15
1998-99	La. Tech	Head Coach	19-9
1999-00	La. Tech	Head Coach	21-8
2000-01	La. Tech	Head Coach	17-12
2001-02	La. Tech	Head Coach	22-10/NIT
2002-03	La. Tech	Head Coach	12-15
2003-04	La. Tech	Head Coach	15-15
2004-05	La. Tech	Head Coach	14-15
2005-06	La. Tech	Head Coach	20-13/NIT
2006-07	La. Tech	Head Coach	10-20
2008-09	LSU	Assistant Coach	27-8/NCAA
2009-10	LSU	Assistant Coach	11-20
2010-11	ULM	Head Coach	7-24
2011-12	ULM	Head Coach	3-26
2012-13	ULM	Head Coach	4-23
2013-14	ULM	Head Coach	10-17
2014-15	ULM	Head Coach	22-12/CBI

PLAYING CAREER

- Played for ULM from 1978-82; Coached by Lenny Fant, Benny Hollis & Mike Vining
- 1979 Atlantic Sun Tournament Champions, NIT
- 1980 Atlantic Sun Regular Season Champions
- 1982 Atlantic Sun Tournament Champions, NCAA
- Two-time team captain ('81 & '82)
- Led team in assists twice

EDUCATION

- Bachelor's degree in general business, ULM (1982)
- Master's degree in guidance counseling, ULM (1986)

ULM Quick Notes Continued...

- The Warhawks are 7-2 all-time against Mercer (page 7). The last meeting came in 1981-82. The program's are both former members of the Atlantic Sun Conference
- On the season, ULM has held the opposition to under 60 points 17 times (half its games), including 10 times (half its games) in SBC play
- ULM ranks top-5 in the country in field goal percentage defense (.379) and eighth in the nation in three-point field goal percentage defense (.293). It is also top-25 in defensive rebounds, grabbing 25.9 per outing
- The Warhawks have won seven of their last nine road games. It included a stretch of six road victories in a row, the most since 1993-94
- ULM is 13-3 at Fant-Ewing Coliseum this year and 403-172 (.701) all-time. Including the CBI, the 16 home games in 2014-15 are the most since 1983-84
- The Warhawks posted a marquee non-conference win on the road at UAB, 74-65 to open the season. The Blazers went on to win the C-USA Tournament and defeat third-seeded Iowa State in the NCAA Tournament
- For the third year in a row, the Warhawks won a Team Academic Award from the Sun Belt Conference. The Warhawks were once again recognized on the court with a special ceremony before their first game at the SBC Championships. In addition to the team award, sophomore Nick Coppola was named to the Commissioner's List and junior DeMondre Harvey and redshirt-freshman Lance Richard both earned Honor Roll recognition
- ULM is 18-2 on the season when it has at least three double-figure scorers, 9-0 when it has at least four double-figure scorers and 9-0 when it shoots over 50 percent from the field
- Ongwae leads the team in scoring with 13.9 points per game and grabs 6.7 rebounds per contest. Ongwae has reached double-figures in scoring 22 times this year, including seven 20-plus outings. He's a three-time LSWA, two-time SBC and two-time CSM Player of the Week winner this season. Ongwae ranks second in the SBC in free throw percentage (.840). He has seven career double-doubles including four this season
- Deng put in 11.1 points per game in league action and shot .368 (25-68) from three-point range. He averages 1.4 blocks per game on the year, third-best in the SBC. Deng has swatted a block in 26 games this season and at least two blocks 15 times. He has posted five double-doubles on the year and has reached double-figures in scoring 18 times
- Sophomore Nick Coppola is second in the SBC in assist:turnover ratio (2.2) and assists (3.9 apg). He's played 40 minutes (or more) 14 times this season and 22 times in his career. He played six straight 40 minute games, a school record, breaking Maurice Bell's string of five in a row in 1999-2000. Coppola scores 9.4 points per game on the year and is shooting a team-high .396 (53-134) from beyond-the-arc
- Junior Justin Roberson has reached double-figures in scoring in six of the last nine games. He averages 9.1 points per game on the year and leads the team with 37 steals
- Junior Jamaal Samuel is coming off a 15-point and career-high eight-rebound game against EMU. It was his sixth double-figure scoring game of the year
- This season, ULM etched two win streaks of six games in the same year for the first time since 1992-93
- Two players registered a double-double (Deng/Harvey) against the Jags in the SBC Quarterfinals. It marked the third time the Warhawks have done that in a game this season (previously against La. College and Northwestern St.)



ULM Warhawks Men's Basketball

University of Louisiana at Monroe



ULM Quick Notes Continued...

- ULM honored Chinedu Amajoyi, Tylor Ongwae, Evan Sims and Marvin Williams on Senior Day with a special presentation before the game. All four are on pace to graduate with degrees from ULM in the spring

- The Warhawks finished 5-2 in February. The five wins were the most since 1999-2000. They wrapped up the month of January with an 8-2 record, their best January record since 2001-02

- The Warhawks notched five season-sweeps on the year. ULM completed the season-sweep over rival UL-Lafayette for the first time since 1971-72. The Warhawks also swept South Alabama, UALR, Troy and Texas State. It was the second year in a row that ULM swept both South Alabama and UALR

- ULM completed a three-game season sweep over USA. It marked the first-time ULM defeated a team three times in the same year since 1996-97 when it did it to Northwestern State. It also marked the fifth consecutive victory over the Jaguars dating back to last season

- The Warhawks are receiving votes in the latest CollegeInsider Mid-Major Top-25 Poll. They have been as high as No. 22 this season

- Twice this season the Warhawks erased a 13-point second half deficit to come back and win in overtime. They did it at UT Arlington and Troy. Keith Richard is 20-9 all-time in overtime in his head coaching career and 3-0 SBC this year

- The Warhawks also came back from a 12-point second half deficit against Texas State on Senior Day to win, 56-53

- ULM posted an 18-point win over South Alabama on the road in the second meeting this year, the largest win over USA in school history in 18 meetings. Roberson went off for 18 points on six made field goals, six free throws, five offensive rebounds, four assists, three steals and a block

- At the start of conference play, ULM shot up to the top of the standings after its first six-game winning streak of the year. It was the most consecutive SBC victories in school history. It was also the most league wins in-a-row since 1998-99 when it was a member of the Southland Conference

- Ongwae won Sun Belt Conference Player of the Week, College Sports Madness SBC Player of the Week and Louisiana Player of the Week on Feb. 9. He averaged 20 points per game on the week and led the Warhawks to a pair of victories including a road win at Georgia Southern to catapult them into first-place

- It marked the second SBC and CSM weekly awards and third LSWA weekly award for Ongwae this season. ULM is also the only team in the SBC to win three weekly awards this year as senior Marvin Williams won on Jan. 12

- Ongwae was also named to the Capital One Academic All-District First-Team, the only one from the Sun Belt Conference

- Senior Marvin Williams was named SBC Player of the Week and Co-Louisiana Player of the Week on Jan. 12, 2015. Williams shot 26-33 (.798) and averaged 20.7 points on the week. He posted a career-high 22 points against Red Wolves and then matched his scoring and rebounding highs with 22 and 13 against the Mavs, respectively. Williams' Player of the Week honors came on a stretch of three games in five days where the Warhawks went undefeated

- Ongwae's first couple weekly awards came when he won Co-LSWA Player of the Week on Dec. 22, 2014 and Sun Belt Conference Player of the Week on Nov. 18, 2014. He was named to the Preseason All-SBC Second-Team after earning four postseason awards in 2013-14

HOME COURT ADVANTAGE

403-172 All-Time in Fant-Ewing Coliseum

ULM RECORDS IN FANT-EWING

Year	Games	Record	Pct.	Avg. Attend.
1971-72	10	6-4	.600	4,190
1972-73	11	8-3	.727	3,232
1973-74	11	8-3	.727	3,250
1974-75	12	11-1	.917	3,454
1975-76	13	10-3	.769	5,451
1976-77	13	9-4	.692	5,073
1977-78	13	10-3	.769	4,459
1978-79	16	15-1	.937	5,215
1979-80	14	10-4	.714	3,678
1980-81	16	8-8	.500	3,067
1981-82	16	13-3	.812	3,808
1982-83	14	12-2	.857	2,946
1983-84	16	11-5	.688	2,098
1984-85	13	9-4	.692	2,380
1985-86	15	14-1	.933	2,114
1986-87	13	8-5	.615	2,582
1987-88	12	10-2	.833	2,582
1988-89	12	8-4	.667	2,861
1989-90	14	13-1	.928	2,949
1990-91	14	14-0	1.000	3,327
1991-92	12	9-3	.750	2,710
1992-93	14	14-0	1.000	3,892
1993-94	14	10-4	.714	3,351
1994-95	12	9-3	.750	3,619
1995-96	11	8-3	.727	2,182
1996-97	12	9-3	.750	1,822
1997-98	11	7-4	.636	1,301
1998-99	11	7-4	.636	1,913
1999-00	14	11-3	.786	2,003
2000-01	13	9-4	.692	935
2001-02	12	12-0	1.000	3,437
2002-03	12	7-5	.583	1,412
2003-04	13	9-4	.692	1,624
2004-05	13	6-7	.462	1,296
2005-06	13	8-5	.615	793
2006-07	14	14-0	1.000	1,952
2007-08	12	5-7	.417	1,338
2008-09	14	8-6	.571	907
2009-10	14	8-6	.571	1,398
2010-11	13	4-9	.308	1,400
2011-12	13	0-13	.000	1,438
2012-13	12	3-9	.250	1,255
2013-14	12	6-6	.500	1,513
2014-15	16	13-3	.813	1,833
TOTALS	575	403-172	.701	



ULM Warhawks Men's Basketball

University of Louisiana at Monroe



ULM's Rankings in the SBC

On the season, ULM ranks...

First in FG% def.: .379	Coppola second in assists: 3.9 apg
First in 3FG% def.: .293	Coppola second in 3FG%: .396
Second in scoring def.: 59.9 ppg	Coppola second in ast:turn: 2.2
Second in FT%: .712	Coppola second in mins: 36.2 mpg
Second in blocks: 4.1 bpg	Ongwae second in FT%: .840
Second in reb. margin: +2.8	Deng third in blocks: 1.4 bpg
Second in def. rebs: 25.9 drpg	Deng third in def. rebs: 5.3 drpg
Second in def. reb%: .703	Deng fourth in rebs: 7.2 rpg
Third in assists: 13.3 apg	Ongwae fourth in mins: 35.2 mpg
Third in ast:turn ratio: 1.1	
Third in reb. off.: 37.1 rpg	
Third in reb. def.: 34.0	
Third in off. reb%: .323	

In SBC Games Only, ULM ranked...

First in scoring def: 60.0 ppg	Coppola first in mins: 37.2 mpg
Second in FG% def: .390	Coppola third in ast:turn: 1.9
Second in 3FG%: .306	Ongwae third in FT%: .859
Second in reb. margin: +2.2	Ongwae fourth in mins: 36.5 mpg
Second in def. reb%: .717	Deng fifth in blocks: 1.2 bpg
Third in blocks: 3.5 bpg	Ongwae fifth in rebs.: 7.0 rpg
Third in ast:turn: 1.1	Deng sixth in rebs: 6.9 rpg
Third in reb. off.: 36.0 drpg	
Third in reb. def.: 25.4 drpg	

Capital One Academic 2014-15 All-District First-Team (District 6)

Brandon Bos (South Dakota), Senior, Markham, Ontario
3.57; Kinesiology & sports science

Mike Gesell (Iowa), Junior, South Sioux City, Neb.
3.93; Finance

Chris Kading (North Dakota St.), Junior, De Pere, Wis.
3.80; Exercise science

Tylor Ongwae (ULM), Senior, Eldoret, Kenya
3.45; Business management

Jarrold Uthoff (Iowa), Junior, Cedar Rapids, Iowa
3.34 Economics

Note: Ongwae was the only Academic All-District First-Team winner from the Sun Belt Conference in any of the eight districts

ULM Quick Notes Continued...

- The Warhawks have won three SBC Player of the Week awards this season with Ongwae winning twice. ULM has had two different players earn SBC Player of the Week honors in the same season for the first time in school history
- Ongwae has won the Warhawk of the Week award nine times in his career, the most in the award's two-year history
- The Warhawks closed out non-conference play with a winning record for the first time since 2007-08
- Earlier this season, ULM took eighth-ranked Florida to overtime. Coppola hit a three-pointer with 19 seconds left to level the score at 51. ULM led 54-53 with 3:00 remaining in overtime after a three-point play from Ongwae
- The 61 points allowed versus No. 8 Florida was the lowest ULM has ever let up against a ranked opponent in program history
- ULM hung around in front of 13,710 fans at The Pit against New Mexico in a closely contested 54-46 decision. ULM went on an 11-0 run in the second half to make it a six-point game with 3:48 remaining
- The Warhawks posted a historic 106-39 victory over Champion Baptist in their home opener. The 67-point win broke the school record for largest margin of victory. It was also the most points ULM scored in a game since Feb. 17, 2001 in a game against UTSA. Additionally, the 67-point victory is the largest of any game in the Sun Belt Conference this season
- The Warhawks followed it up with a 28-point home win over Louisiana College as both Deng and Coppola recorded double-doubles
- Coppola dished out a career-high 12 assists against Louisiana College in a double-double. Coppola started all 27 games last year at point guard as a true freshman and has started every game of his career
- The Warhawks opened the season with a 74-65 victory on the road over UAB. It was the first opening night victory for ULM since Nov. 14, 2008 when it defeated Morehead State, 56-54 and the first opening night road win since Nov. 23, 1999 when it won at Samford, 67-60. Additionally, it was the largest opening night road victory since Dec. 1, 1979 when it beat Nicholls State, 79-69
- Keith and Lance Richard have gone up against four other father/son duos this season. The Richard's took on Josiah/Eric Capaci at Champion Baptist, Billy/Billy Donovan at Florida, Cullen/Craig Neal at New Mexico and Ron/R.J. Hunter at Georgia State twice
- The Warhawks entered the 2014-15 season without any APR penalties for the first time in five years. Keith Richard turned the program around academically since inheriting APR sanctions when he took over at the helm, and the Warhawks have won back-to-back-to-back Sun Belt Conference academic awards
- For the first time since the NCAA instituted academic progress rate (APR) scores in 2003-04, the ULM men's basketball program tallied a perfect 1,000 score in the 2013-14 season. Over the summer, ULM was the only Division I institution in the state of Louisiana to earn the Team Academic Excellence award from the NABC
- On Jan. 24, 2015, legendary former head coach Mike Vining was honored at halftime in the game against Georgia Southern with the raising of a "402" banner. It represents his total number of regular season and postseason victories at ULM over 24 seasons at the helm



ULM Warhawks Men's Basketball

University of Louisiana at Monroe



Ongwae, Deng Earn All-Conference Honors; Richard Wins SBC Coach of the Year

After a breakthrough year from the ULM men's basketball program, senior Tylor Ongwae earned All-Conference First-Team honors, junior Majok Deng was named to the All-Conference Third-Team, and head coach Keith Richard won Coach of the Year, the league office announced Tuesday.

Ongwae, a native of Eldoret, Kenya, led the team in scoring with 13.8 points per game and tied Deng for the team high in rebounding with 6.9 per contest. Ongwae reached double-figures in scoring 20 times this year, including six 20-plus outings.

On the season, Ongwae tallied four double-doubles and four double-figure rebounding games. He registered a season-high 25 points two times. Ongwae played six 40-minute games, all in conference play, including a stretch of four in a row.

Ongwae was the only player from the SBC selected to a Capital One Academic All-District First-Team from any of the eight districts. He was a three-time LSWA Player of the Week winner, two time SBC Player of the Week winner and two time College Sports Madness SBC Player of the Week winner.

It marked the second consecutive All-Conference recognition for Ongwae as he was named to the Third-Team last season.

Deng got it done on both ends of the court, averaging 11.1 points and 6.9 rebounds in conference play. He ranked third in the league in blocks with 1.4 per contest. Deng swatted away a block in 24 games this year, including at least two blocks in 14 games.

The Adelaide, Australia product reached double-figures in scoring 18 times and double-figures in rebounding five times. He posted a team-high five double-doubles on the year, including a big 14-point, 15-rebound outing against UALR at home.

Deng set his career-high in scoring with 21 points on the road against UALR and neared a double-double with nine rebounds. He played 40 minutes twice and ranked third in the league in defensive rebounds with 5.1 per game.

The length of both Ongwae and Deng resulted in big defensive numbers for ULM all season. The duo helped the Warhawks keep the opposition to under 60 points 15 times, including half (10) of their conference games. ULM also ranked top-15 in the nation in both field goal and three-point field goal percentage defense the entire year.

Richard coached the Warhawks to their 11th 20-win season in school history and their first in 13 years. He elevated ULM to a tie for second-place in the final SBC standings after being picked sixth preseason and last two years ago.

For the second straight year, Richard doubled both ULM's overall and conference win totals. The 14 SBC victories were the most in school history. He coached the Warhawks to two different six-game winning streaks in conference, a 12-3 home record and won seven of his last nine road games.

Richard won Coach of the Year in his very first season without any APR penalties from the NCAA. He inherited heavy APR sanctions when he took over at the helm on April 22, 2010, and has since won back-to-back SBC team academic awards. Last year, ULM recorded a perfect 1,000 APR score for the first time since the NCAA instituted APR scores in 2003-04.

It marked the second career SBC Coach of the Year award for Richard who previously won in 1998-99 as head coach of former league-member Louisiana Tech.

First-Team All-Conference

Jelani Hewitt (Ga. Southern, Sr., Guard)
Ryan Harrow (Georgia St., R-Sr., Guard)
R.J. Hunter (Georgia St., Jr., Guard)
Shawn Long (UL Lafayette, Jr., Forward)
Tylor Ongwae (ULM, Sr., Forward)

Second-Team All-Conference

Frank Eaves (Appalachian St., Jr., Guard)
Anthony Livingston (Ark. St., So., Forward)
Ken Williams (South Alabama, So., Guard)
Lonnie McClanahan (UTA, Sr., Guard)
Emani Gant (Texas State, Jr., Forward)

Third-Team All-Conference

Josh Hagins (UALR, Jr., Guard)
Trent Wiedeman (Ga. Southern, Sr., Center)
Jay Wright (UL Lafayette, So., Guard)
Majok Deng (ULM, Jr., Forward)
Wesley Person (Troy, Fr., Guard)

Player of the Year

R.J. Hunter (Georgia State, Jr., Guard)

Defensive Player of the Year

Jelani Hewitt (Georgia Southern, Sr., Guard)

Freshman of the Year

Wesley Person (Troy, Fr., Guard)

Joe Gottfried Coach of the Year

Keith Richard (ULM, Fifth Season)



Tylor Ongwae & Majok Deng



ULM Warhawks Men's Basketball

University of Louisiana at Monroe



WE ARE ULM

12 REGULAR SEASON CHAMPIONSHIPS

1961-62 - Gulf States Conference
 1964-65 - Gulf States Conference
 1978-79 - Atlantic Sun Conference
 1979-80 - Atlantic Sun Conference
 1985-86 - Southland Conference
 1989-90 - Southland Conference
 1990-91 - Southland Conference
 1992-93 - Southland Conference
 1993-94 - Southland Conference
 1995-96 - Southland Conference
 1996-97 - Southland Conference
 2006-07 - Sun Belt Conference West Division

10 POSTSEASON APPEARANCES

1978-79 - NIT
 1981-82 - NCAA Tournament
 1985-86 - NCAA Tournament
 1987-88 - NIT
 1989-90 - NCAA Tournament
 1990-91 - NCAA Tournament
 1991-92 - NCAA Tournament
 1992-93 - NCAA Tournament
 1995-96 - NCAA Tournament
 2014-15 - CBI

EIGHT TOURNAMENT CHAMPIONSHIPS

1978-79 - Atlantic Sun Conference
 1981-82 - Atlantic Sun Conference
 1985-86 - Southland Conference
 1989-90 - Southland Conference
 1990-91 - Southland Conference
 1991-92 - Southland Conference
 1992-93 - Southland Conference
 1995-96 - Southland Conference

Numerical Roster

No.	Player	Pos.	Ht.	Wt.	Cl.	Hometown (Previous School)
0	Williams, Marvin	C	6-8	245	Sr.	Memphis, Tenn. (NW Florida State College)
1	Brown, Alex	G	6-4	185	Fr.	Vernon, Fla. (Vernon HS)
2	Harvey, DeMondre	F	6-7	210	Jr.	Minden, La. (Pearl River CC)
3	Cooper, Prince	G	6-4	215	So.	Freeport, Bahamas (Miami-Dade College)
4	Foster, Mack	G	6-2	185	Jr.	Beulah, Miss. (East Mississippi CC)
5	Samuel, Jamaal	F	6-9	205	Jr.	New Orleans, La. (Illinois State)
10	Taylor, Roderick	F	6-8	210	Fr.	Harker Heights, Texas (Harker Heights HS)
11	Coppola, Nick	G	5-11	190	So.	Richmond, Va. (Benedictine Prep)
12	Ongwae, Tylor	F	6-7	205	Sr.	Eldoret, Kenya (Ranger College)
13	Deng, Majok	F	6-10	190	Jr.	Adelaide, Australia (Indian Hills CC)
20	Amajoyi, Chinedu	G	6-3	195	Sr.	Rancho Cucamonga, Calif. (Kilgore College)
22	Richard, Lance	G	5-10	175	RFr.	Monroe, La. (Sterlington HS)
32	Roberson, Justin	G	6-1	185	Jr.	Natchitoches, La. (Western Texas)

COACHING STAFF

Head Coach: Keith Richard (ULM '82)
 Assistant Coach: Ryan Cross (Buffalo '95)
 Assistant Coach: Lonnie Cooper (Louisiana Tech '99)

Assistant Coach: J.A. Anglin (LSU Shreveport '10)
 Graduate Assistant: Luke Richard
 Team Manager: Gil Williams

PRONUNCIATION

Keith/Lance/Luke RICHARD Ree-SHARD
 CHINEDU AMAJOYI Chin-ih-due Om-uh-joy
 TYLOR ONGWAE Tie-ler Ong-why
 MAJOK Deng Muh-jook Day-ng
 Justin ROBERSON Rob-er-sin
 Nick COPPOLA Cuh-pole-uh



BY CLASS

Seniors (3)..... Chinedu Amajoyi
 Tylor Ongwae
 Marvin Williams
 Juniors (5) Majok Deng
 Mack Foster
 DeMondre Harvey
 Justin Roberson
 Jamaal Samuel
 Sophomores (2) Prince Cooper
 Nick Coppola
 Freshmen (3)..... Alex Brown
 Lance Richard
 Roderick Taylor

BY POSITION

Guards (7) Chinedu Amajoyi
 Alex Brown
 Prince Cooper
 Nick Coppola
 Mack Foster
 Lance Richard
 Justin Roberson
 Forwards (5)..... Majok Deng
 DeMondre Harvey
 Tylor Ongwae
 Jamaal Samuel
 Roderick Taylor
 Center (1) Marvin Williams

BY STATE/COUNTRY

Australia..... Majok Deng
 Bahamas Prince Cooper
 California..... Chinedu Amajoyi
 Florida..... Alex Brown
 Kenya Tylor Ongwae
 Louisiana (4) DeMondre Harvey
 Lance Richard
 Justin Roberson
 Jamaal Samuel
 Mississippi..... Mack Foster
 Tennessee Marvin Williams
 Texas Roderick Taylor
 Virginia Nick Coppola



ULM Warhawks Men's Basketball

University of Louisiana at Monroe



ULM Quick Facts

Location _____ Monroe, La.
 Enrollment _____ 8,517
 Founded _____ 1931
 Nickname/Mascot _____ Warhawks/Ace
 Colors _____ Maroon & Gold
 President _____ Dr. Nick Bruno
 Director of Athletics _____ Brian Wickstrom
 Conference _____ Sun Belt
 Affiliation _____ NCAA Division I
 All-Time Record _____ 932-826 (63rd season)
 Winning Seasons _____ 39 (20+ wins 11 times)
 Home Venue _____ Fant-Ewing Coliseum (7000)
 Playing Surface _____ Maple
 Opened _____ 1971
 Press Row Phone _____ 318-342-6920

Head Coach _____ Keith Richard
 Record at ULM _____ 46-102 (fifth year)
 Career Record _____ 196-219 (14th year)
 Assistant Coach _____ Ryan Cross
 Assistant Coach _____ Lonnie Cooper
 Assistant Coach _____ J.A. Anglin
 Graduate Assistant _____ Luke Richard
 Team Manager _____ Gil Williams
 Athletic Trainer _____ Jeremy Teblum

Website _____ www.ulmwarhawks.com
 Facebook _____ www.facebook.com/warhawks
 Twitter _____ @ULM_MBB

Scouting Mercer

Mercer defeated Stony Brook at home, 72-70 in its opening round game of the CBI Tournament. Ike Nwamu led the team with 25 points including 10 points in the final 2:02. He hit the game-winning jumper with two seconds left.

The Bears are 19-15 overall and wrapped up SoCon play at 12-6. Nwamu leads the team with 15.0 points per game, while Darius Moten puts in 11.4 per outing. Mouton did not play against Stony Brook. He played three minutes in Mercer's opening round SoCon Tournament game, an 89-61 win, but then missed the next round, a 52-49 defeat to Furman.

Mercer is in its fourth consecutive postseason. Its one of seven teams in the nation to win a game in the NCAA, NIT, CBI and CIT.

The Bears are 59-8 at home over the last four seasons including a 12-3 mark this year.

Bob Hoffman is in his fifth season as head coach and has led the team to its most successful period in program history. Not only did he guide the Bears to the postseason last year, the Bears knocked off Duke in a 14 versus 3 seed matchup.

At Mercer, Hoffman also holds wins over Alabama, Auburn, Florida State, Georgia Tech, Ole Miss, Seton Hall and Tennessee. He was a back-to-back Atlantic Sun Coach of the Year winner in 2013 and 2014.

His 2011-12 squad set the school record for wins in a season with 27. In 2012-13, the Bears defeated Tennessee in the first round of the NIT.

All-Time Series History vs. Mercer

ULM leads, 7-2
 At ULM: ULM leads, 5-0
 At Mercer: ULM leads, 2-1
 On Neutral Courts: Mercer leads, 1-0

Game-by-Game Series History

ULM 69, Mercer 57 - Jan. 1976 (Macon, Ga.)
 ULM 94, Mercer 81 - 1/15/77 (Monroe, La.)
 ULM 90, Mercer 69 - 3/2/79 (Monroe, La.)
 ULM 78, Mercer 77 - 1/3/80 (Monroe, La.)
 ULM 102, Mercer 71 - 2/28/80 (Monroe, La.)
 Mercer 75, ULM 66 - 2/26/81 (Macon, Ga.)
 Mercer 59, ULM 55 - 3/6/81 (Shreveport, La.)
 ULM 97, Mercer 75 - 1/8/82 (Monroe, La.)
 ULM 66, Mercer 65 - 2/20/82 (Macon, Ga.)

2014-15 SBC Preseason

Poll (First-place votes in parenthesis)

1. Georgia State 121 (11)
2. UL-Lafayette 110
3. UALR 94
4. UT Arlington 75
5. Arkansas State 73
6. **ULM** 69
7. Texas State 43
8. Troy 42
- T-9. Georgia Southern 38
- T-9. South Alabama 38
11. Appalachian State 23



SUN BELT
CONFERENCE

SUN BELT CONFERENCE PRESEASON TEAMS

Preseason First Team All-Conference

Jelani Hewitt (Georgia Southern, Senior, Guard)
 Ryan Harrow (Georgia State, Senior, Guard)
 R.J. Hunter (Georgia State, Junior, Guard)
 Shawn Long (UL Lafayette, Senior, Forward)
 Lonnie McClanahan (UT Arlington, Senior, Guard)

Preseason Second Team All-Conference

Josh Hagins (UALR, Junior, Guard)
 James White (UALR, Junior, Forward)
 Xavian Rimmer (UL Lafayette, Senior, Guard)
Tylor Ongwae (ULM, Senior, Forward)
 Emani Grant (Texas State, Junior, Forward)

Preseason Third Team All-Conference

Tab Hamilton (Appalachian State, Senior, Guard)
 Trent Wiedeman (Georgia Southern, Senior, Guard)
 Curtis Washington (Georgia State, Senior, Forward)
 Jamel Outler (UT Arlington, Senior, Guard)
 Kevin Thomas (Troy, Senior, Forward)

Preseason Player of the Year

R.J. Hunter (Georgia State, Junior, Guard)



ULM Warhawks Men's Basketball

University of Louisiana at Monroe



Biggest Turnarounds from 2013-14

1. UC Davis - 16 wins
2. *Temple, Notre Dame - 15 wins
3. New Hampshire & Central Michigan - 13 wins
4. *ULM, Maryland-Eastern Shore - 12 wins
5. Lamar, Eastern Washington, Cornell, Colorado State, *Maryland, *Tennessee-Martin - 11 wins
6. *Loyola-Chicago, Hofstra, Sacred Heart - 10 wins
7. Lafayette, UNC Wilmington, *Rhode Island, TCU, Bowling Green, Delaware State - 9 wins
8. Howard, Butler, Southern, James Madison - 8 wins
9. North Florida, Rider, Monmouth, Georgia Southern - 7 wins

* denotes still playing

ULM's Record by Starting Lineup

Coppola-Roberson-Ongwae-Samuel-Deng (8-4, 5-3 SBC)
 Coppola-Foster-Ongwae-Deng-Williams (6-2, 6-2 SBC)
 Coppola-Roberson-Ongwae-Deng-Williams (4-4, 2-0 SBC)
 Coppola-Roberson-Ongwae-Deng-Harvey (3-1, 0-0 SBC)
 Coppola-Amajoyi-Ongwae-Samuel-Deng (1-0, 1-0 SBC)
 Coppola-Amajoyi-Ongwae-Samuel-Harvey (0-1, 0-1 SBC)

Where ULM Ranks Nationally...

Fifth in FG% defense (.379)
 Eighth in 3FG% defense (.293)
 25th in defensive rebounds per game (25.9)
 26th in scoring defense (59.9 ppg)
 32nd in total rebs (1,263)
 Coppola 15th in mins (1,231)
 Ongwae 25th in mins (1,198)

In the CBI First Round...

Ongwae's Season-High Lifts ULM over Eastern Michigan, 71-67

MONROE, La. — Senior Tylor Ongwae notched a season-high 26 points including a pair of huge three-pointers late as the ULM men's basketball program overcame a 19-0 Eastern Michigan run in the second half to win, 71-67 on Wednesday at Fant-Ewing Coliseum in the first round of the College Basketball Invitational.

ULM (22-12) led 54-38 when the Eagles (21-14) stormed back with their 19-0 surge to take the lead, 57-54 with 7:51 to go. EMU was still up, 63-60 at the 3:45 mark when junior Jamaal Samuel converted a put-back and Ongwae came through with his back-to-back three-pointers to put ULM on top, 68-65 with 52 seconds left.

Junior Justin Roberson hit a pair of free throws to extend the lead to 70-65 and complete a 10-2 run with 35 seconds remaining.

EMU's Tim Bond responded a jumper, and the Eagles were able to get a tie-up with the possession arrow with 20 seconds left. The Warhawks forced a tough three-point attempt and junior Majok Deng came down with the rebound after the miss with 5.6 seconds left. He made a free throw to seal the game.

Ongwae, an All-SBC First-Team selection, played all 40 minutes, drained nine field goals, recorded six assists and pulled down five rebounds. Samuel netted 15 points and grabbed eight rebounds, and All-SBC Third-Team honoree Deng registered 15 points and eight rebounds. Roberson finished with nine points, seven rebounds and three assists.

Raven Lee led EMU with 17 points. Bond ended with 13 points and six assists, and Trent Perry had 10 points.



Official Basketball Box Score -- Game Totals -- Final Statistics
EASTERN MICHIGAN vs ULM
 03/18/15 7:00 PM CDT at Fant-Ewing Coliseum; Monroe, Louisiana



EASTERN MICHIGAN 67 • 21-14

BAYLORN MICHAEL 07-21-14															
#	Player	Total		3-Ptr	Rebounds				PF	TP	A	TO	Blk	Stl	Min
		FG-FGA	FG-FGA	FT-FTA	Off	Def	Total								
00	Lee, Raven	5-17	1-6	6-6	2	0	2	2	17	2	2	0	2	34	
01	Talley, Mike	1-7	0-3	2-2	1	1	2	1	4	2	4	0	1	24	
03	Okoloji, Anali	3-6	0-0	1-1	2	1	3	0	7	2	1	0	2	17	
14	Ward, Karrington	2-7	1-4	3-4	1	6	7	4	8	0	0	0	3	25	
21	Hunter, Jerome	0-1	0-0	0-0	1	1	2	0	0	0	0	0	0	5	
04	Nazione, Brandon	2-6	1-1	0-0	3	1	4	3	5	0	3	0	1	13	
05	Price, Jodan	1-6	1-5	0-0	0	0	0	0	3	0	0	0	0	10	
10	Bond, Tim	5-7	1-3	2-2	0	4	4	2	13	6	0	2	2	33	
12	Ajayi, Olalekan	0-0	0-0	0-0	0	1	1	5	0	0	0	0	0	17	
13	Perry, Trent	4-4	2-2	0-0	0	0	0	0	10	0	0	0	0	14	
25	Alvano, Ethan	0-0	0-0	0-0	0	0	0	0	0	0	0	0	0	3	
30	Samuels, Mike	0-0	0-0	0-0	0	0	0	2	0	0	0	0	0	5	
	Team				1	1	2								
	Totals	23-61	7-24	14-15	11	16	27	19	67	12	11	2	11	200	
FG % 1st Half: 10-31		32.3%	2nd half: 13-30	43.3%	Game: 23-61		37.7%							Deadball	
3FG % 1st Half: 4-14		28.6%	2nd half: 3-10	30.0%	Game: 7-24		29.2%							Rebounds	
FT % 1st Half: 7-7		100.0%	2nd half: 7-8	87.5%	Game: 14-15		93.3%							2.1	

ULM 71 • 22-12

#	Player	Total		3-Ptr		Rebounds			PF	TP	A	TO	Blk	Stl	Min
		FG-FGA	FG-FGA	FT-FTA	Off	Def	Tot								
05	Samuel, Jamaal	* 7-11	0-0	1-2	3	5	8	3	15	0	0	1	0	28	
11	Coppola, Nick	* 1-5	1-4	0-0	0	4	4	1	3	5	1	0	0	38	
12	Ongwae, Tylor	* 9-17	4-8	4-6	3	2	5	2	26	6	4	0	1	40	
13	Deng, Majok	* 3-12	0-1	8-11	4	4	8	0	14	3	4	2	0	37	
32	Roberson, Justin	* 3-8	0-2	3-3	0	7	7	3	9	3	4	0	1	30	
02	Harvey, DeMondre	1-1	0-0	0-0	2	0	2	0	2	0	1	0	0	14	
04	Foster, Mack	1-2	0-1	0-0	0	0	0	1	2	1	3	0	0	13	
	Team				3	3	6								
Totals		25-56	5-16	16-22	15	25	40	10	71	18	17	3	2	200	
FG % 1st Half: 15-34 44.1%		2nd half: 10-22 45.5%		Game: 25-56 44.6%		Deadball									
3FG % 1st Half: 2-10 20.0%		2nd half: 3-6 50.0%		Game: 5-16 31.3%		Rebounds									
FT % 1st Half: 6-10 60.0%		2nd half: 10-12 83.3%		Game: 16-22 72.7%		5.1									

Officials: R-James Durham, U1-KB Burdett, U2-Rusty Phillips
 Technical fouls: EASTERN MICHIGAN-None. ULM-None.
 Attendance: 3003
 College Basketball Invitational First Round (Game 5)

Score by periods	1st	2nd	Total
EASTERN MICHIGAN	31	36	67
ULM	38	33	71

Points	In	Off	2nd	Fast	Bench
EMU	26	27	10	6	31
ULM	30	15	12	4	4

Last FG - EMU 2nd-00:23, ULM 2nd-00:52.
 Largest lead - EMU by 4 1st-06:24, ULM by 16 2nd-12:55.
 EMU led for 10:09. ULM led for 25:06. Game was tied for 04:36.

Score tied - 9 times.
 Lead changed - 14 times.

2015 College Basketball Invitational

FIRST ROUND

QUARTERFINALS

QUARTERFINALS

FIRST ROUND

March 18
Gardner-Webb 78
9:00pm ET
COLORADO 87

March 23

Colorado

March 18
Pepperdine 45
10:00 pm ET
SEATTLE 62

10:00 pm ET

SEATTLE

March 18
Stony Brook 70
ESPN 3 7:00pm ET
MERCER 72

March 23

MERCER

March 18
Eastern Michigan 67
8:00 pm ET
LOUISIANA MONROE 71

7:00 pm ET

ESPN 3

Louisiana Monroe



March 23
VERMONT

March 18
85 Vermont
7:00 pm ET
81 HOFSTRA

7:00 pm ET
Radford

March 18
78 Radford
8:00 pm ET
57 DELAWARE STATE

March 23
LOYOLA CHICAGO
8:00 pm ET
Oral Roberts

March 17
59 Rider
8:00 pm ET
62 LOYOLA CHICAGO

March 18
87 UC Santa Barbara
8:00 pm ET
91 ORAL ROBERTS

HOME TEAMS IN CAPS

Tournament is re-bracketed after the Quarterfinal Round

SEMIFINALS

CHAMPIONSHIP SERIES

*Championship Series is a Best-of-Three
March 30, April 1 & April 3 (if necessary)*

March 30

April 1

April 3*

**if necessary*

Home team in CAPS

March 25

March 25



CHAMPION

Television Schedule

**CBSSPORTS
NETWORK**

March 30, April 1, April 3*

TBA

**if necessary*



ULM Warhawks Men's Basketball

University of Louisiana at Monroe



SUN BELT CONFERENCE STANDINGS

(as of 3/21/15)

School	SBC	Pct.	Overall	Pct.	Streak
1. Georgia State	15-5	.750	25-10	.714	L1
T-2. Georgia Southern	14-6	.700	22-9	.710	L1
T-2. ULM	14-6	.700	22-12	.647	W1
4. UL-Lafayette	13-7	.650	22-13	.629	W2
5. UT Arlington	10-10	.500	16-15	.516	L1
T-6. Appalachian State	9-11	.450	12-17	.414	W3
T-6. South Alabama	9-11	.450	12-21	.364	L1
8. UALR	8-12	.400	13-18	.419	L3
9. Texas State	7-13	.350	14-17	.452	L1
10. Arkansas State	6-14	.300	11-18	.379	L3
11. Troy	5-15	.250	10-19	.345	L4

Sun Belt in the Postseason

NCAA Tournament Round of 64

Georgia State 57, Baylor 56

NCAA Tournament Round of 32

Xavier 75, Georgia State 67

CIT Round of 32

UL-Lafayette 83, Incarnate Word 68

CIT Round of 16

UL-Lafayette 71, Sam Houston St. 70

CIT Quarterfinals

UL-Lafayette vs. TBA, March 25-28

CBI Round of 16

ULM 71, Eastern Michigan 67

CBI Quarterfinals

ULM at Mercer, 6:00 PM (CT)

Player Career Totals

Name	Career 10+ Points	Career 10+ Rebs	Career 10+ Asts
Tylor Ongwae	46 times (20+ 16 times)	7 times	
Nick Coppola	25 times		1 time
Marvin Williams	17 times (20+ 2 times)	3 times	
Jamaal Samuel	7 times		
DeMondre Harvey	4 times	3 times	
Chinedu Amajoyi	3 times		
Name	Season 10+ Points	Season 10+ Rebs	Season 10+ Asts
Tylor Ongwae	22 times (20+ 7 times)	4 times	
Majok Deng	21 times (20+ 1 time)	6 times	
Nick Coppola	17 times		1 time
Justin Roberson	14 times		
Marvin Williams	7 times (20+ 2 times)	1 time	
Jamaal Samuel	6 times		
Mack Foster	4 times		
DeMondre Harvey	3 times	3 times	

Single-Game Categorical Highs 2014-15

Points	Tylor Ongwae - 25, two times, vs. CEBC/LSUA
Field Goals Made	Tylor Ongwae - 10, vs. Central Baptist
3FG Made	Nick Coppola - 5, at Arkansas State
Free Throws Made	Tylor Ongwae - 10, vs. South Alabama
Rebounds	Majok Deng/DeMondre Harvey - 15
Assists	Nick Coppola - 12, vs. Louisiana College
Steals	4, three times (Foster/Roberson/Ongwae)
Blocks	Majok Deng (once)/Jamaal Samuel (2 times) - 4
Minutes	Nick Coppola (45, 2 times)/Tylor Ongwae (45, once)

Number of times in 2014-15 a ULM student-athlete has led the team in...

Player	Points	Rebs	Assists	FGM	FGA	FTM	FTA	3FGM	3FGA	Blocks	Steals	Mins
Tylor Ongwae	15	12	10	18	24	14	13	6	7	5	13	16
Majok Deng	6	17	3	6	4	8	7	15	10	20	6	3
Nick Coppola	5	1	18	5	2	2	2	19	17		10	20
Marvin Williams	5	5		5	3	5	7			7	3	
Jamaal Samuel	3	3		3	4			7	6	11	4	
Justin Roberson	2	3	12	3	3	8	10			4	12	2
Mack Foster	1		2	1			1	6	3	4	5	1
DeMondre Harvey	1	4	1	1			2	1		3	4	
Lance Richard								1	2			
Chinedu Amajoyi			1					1	1			
Prince Cooper							1					1

Note: If multiple student-athletes tie in a category in a single game, they all receive credit for leading the team



SUN BELT™

CONFERENCE

2015 MEN'S BASKETBALL CHAMPIONSHIP MARCH 12-15 - LAKEFRONT ARENA - NEW ORLEANS

Opening Round
Thursday, March 12

Quarterfinals
Friday, March 13

Semifinals
Saturday, March 14

Championship
Sunday, March 15

No. 5 UT Arlington - 62

5 p.m. (CT)
ESPN3

No. 8 Texas State - 68

No. 8 Texas State - 43

5 p.m. (CT)
ESPN3

No. 4 UL Lafayette - 53

No. 4 UL Lafayette - 79

1 p.m. (CT)
ESPN3

No. 1 Georgia State - 83

No. 1 Georgia State - 38

12 p.m. (CT)
ESPN2

No. 1 Georgia State
Champion

No. 2 Georgia Southern - 44

3:30 p.m. (CT)
ESPN3

No. 3 UL Monroe - 43

No. 2 Georgia Southern - 36

No. 3 UL Monroe - 77

7:30 p.m. (CT)
ESPN3

No. 6 South Alabama - 59

No. 6 South Alabama - 57

7:30 p.m. (CT)
ESPN3

No. 7 UALR - 55



All times Central (CT) and subject to change

 @SunBeltConference
 @SunBelt
 @SunBelt
#NOLABound



ULM Warhawks Men's Basketball

University of Louisiana at Monroe



SBC Championships School Records

INDIVIDUAL RECORDS -- SINGLE GAME

POINTS

30.....	Tony Hooper, 2010
26.....	Tony Hooper, 2007
25.....	Tony Hooper, 2007
20.....	Jordan Payne, 2008
20.....	Tylor Ongwae, 2014
17.....	Tylor Ongwae, 2015
17.....	Tommie Sykes, 2010

REBOUNDS

14.....	Majok Deng, 2015
13.....	Lawrence Gilbert, 2009
12.....	Lawrence Gilbert, 2011
11.....	Rudy Turner, 2010
10.....	DeMondre Harvey, 2015
9.....	Marvin Williams, 2014

FIELD GOALS

11.....	Tony Hooper, 2010
9.....	Tony Hooper, 2007
8.....	Tylor Ongwae, 2014
7.....	Tylor Ongwae, 2015
7.....	Jordan Payne, 2008
7.....	Tony Hooper, 2007
7.....	Jordan Payne, 2007

FIELD-GOAL ATTEMPTS

19.....	Tony Hooper, 2010
18.....	Tylor Ongwae, 2014
17.....	Tylor Ongwae, 2015
15.....	Justin Roberson, 2015
15.....	Tony Hooper, 2007

3-POINTERS

7.....	Tony Hooper, 2010
5.....	Tony Hooper, 2007
4.....	Nick Coppola, 2015
4.....	Kyle Koszuta, 2013
4.....	Jordan Payne, 2008
4.....	Jordan Payne, 2007

3-POINT ATTEMPTS

12.....	Tony Hooper, 2010
9.....	Tony Hooper, 2007
9.....	Jonas Brown, 2007
9.....	Jordan Payne, 2007
8.....	Tony Hooper, 2007

FREE THROWS MADE

10.....	Tommie Sykes, 2010
8.....	Tony Hooper, 2007
6.....	Lawrence Gilbert, 2009
6.....	Jonas Brown, 2007
5.....	Gerard Jackson, 2007

FREE-THROW ATTEMPTS

12.....	Tommie Sykes, 2010
9.....	Tony Hooper, 2007
8.....	Tommie Sykes, 2010
6.....	5 players

ASSISTS

10.....	Jayon James, 2014
6.....	Jayon James, 2013
6.....	Jonas Brown, 2007
4.....	Dynile Forbes, 2010
4.....	Jonas Brown, 2008
4.....	Lance Brasher, 2007
4.....	Tony Hooper, 2007

STEALS

6.....	Jayon James, 2013
4.....	Tony Hooper, 2007
3.....	Tylor Ongwae, 2015
3.....	Hugh Mingo, 2011
3.....	Tony Hooper, 2010
3.....	Dynile Forbes, 2010

BLOCKS

3.....	Rudy Turner, 2010
2.....	Jonas Brown, 2007

INDIVIDUAL RECORDS -- TOURNAMENT

POINTS

51.....	Tony Hooper (2 games), 2007
37.....	Tony Hooper (2 games), 2010
33.....	Tommie Sykes (2 games), 2010
29.....	Jordan Payne (2 games), 2007
24.....	Nick Coppola (2 games), 2015
22.....	Majok Deng (2 games), 2015

REBOUNDS

23.....	Majok Deng (2 games), 2015
17.....	Justin Roberson (2 games), 2015
15.....	Rudy Turner (2 games), 2010
14.....	Tony Hooper (2 games), 2010
14.....	Afam Nweke (2 games), 2007

FIELD GOALS

16.....	Tony Hooper (2 games), 2007
13.....	Tony Hooper (2 games), 2010
11.....	Jordan Payne (2 games), 2007
9.....	Jamaal Samuel (2 games), 2015
9.....	Tommie Sykes (2 games), 2010
9.....	Afam Nweke (2 games), 2007

FIELD-GOAL ATTEMPTS

29.....	Tony Hooper (2 games), 2010
29.....	Tony Hooper (2 games), 2007
27.....	Jordan Payne (2 games), 2007
26.....	Tylor Ongwae (2 games), 2015
25.....	Justin Roberson (2 games), 2015
18.....	Tylor Ongwae (1 game), 2014

3-POINTERS

9.....	Tony Hooper (2 games), 2010
8.....	Tony Hooper (2 games), 2007
6.....	Nick Coppola (2 games), 2015
5.....	Jordan Payne (2 games), 2007
4.....	Majok Deng (2 games), 2015
4.....	Kyle Koszuta (1 game), 2013
4.....	Jordan Payne (1 game), 2008

3-POINT ATTEMPTS

19.....	Tony Hooper (2 games), 2010
17.....	Tony Hooper (2 games), 2007
12.....	Jonas Brown (2 games), 2007
11.....	Jordan Payne (2 games), 2007
10.....	Nick Coppola (2 games), 2015
10.....	Majok Deng (2 games), 2015

FREE THROWS

15.....	Tommie Sykes (2 games), 2010
11.....	Tony Hooper (2 games), 2007
9.....	Gerard Jackson (2 games), 2007
8.....	Jonas Brown (2 games), 2007
6.....	Lawrence Gilbert (1 game), 2009

FREE-THROW ATTEMPTS

20.....	Tommie Sykes (2 games), 2010
12.....	Tony Hooper (2 games), 2007
10.....	Gerard Jackson (2 games), 2007
10.....	Jonas Brown (2 games), 2007
8.....	Lance Brasher (2 games), 2007

ASSISTS

10.....	Jayon James (1 game), 2014
9.....	Jonas Brown (2 games), 2007
6.....	Jayon James (1 game), 2013
6.....	Lance Brasher (2 games), 2007
5.....	Nick Coppola (2 games), 2015
5.....	Justin Roberson (2 games), 2015
5.....	Dynile Forbes (2 games), 2010
5.....	Tony Hooper (2 games), 2007
4.....	Brandon Williams (2 games), 2010
4.....	Tony Hooper (2 games), 2010
4.....	Jonas Brown (1 game), 2008
4.....	Jordan Payne (2 games), 2007

STEALS

6.....	Jayon James (1 game), 2013
5.....	Tony Hooper (2 games), 2007
4.....	Tony Hooper (2 games), 2010
4.....	Dynile Forbes (2 games), 2010
3.....	Hugh Mingo (1 game), 2011

BLOCKS

4.....	Rudy Turner (2 games), 2010
2.....	Jamaal Samuel (2 games), 2015
2.....	Lance Brasher (2 games), 2007
2.....	Jonas Brown (2 games), 2007

TEAM RECORDS -- SINGLE GAME

Points:	83, vs. Denver, 2007
Fewest Points:	43, vs. Georgia Southern, 2015
Field Goals:	32, vs. S. Alabama, 2015
FG Attempts:	77, vs. S. Alabama, 2015
3-Pointers:	10, vs. UL-Lafayette, 2010
3FG Attempts:	34, vs. North Texas, 2007
Free Throws:	24, vs. North Texas, 2007
FT Attempts:	33, vs. UL-Lafayette, 2010
Rebounds:	41, vs. North Texas, 2007
Offensive Rebs:	21, vs. S. Alabama, 2015
Assists:	20, vs. Denver, 2007
Steals:	9, two times
Blocks:	4, two times

TEAM RECORDS -- TOURNAMENT

Points:	154, 2007
Field Goals:	51, 2007
Field Goal Attempts:	123, 2015
3-Pointers:	15, two times, 2007 & 2010
3FG Attempts:	66, 2007
Free Throws:	37, 2007
FT Attempts:	58, 2010
Rebounds:	86, 2015
Off. Rebs:	28, 2015
Assists:	28, 2007
Steals:	16, 2010
Blocks:	7, 2010

ALL-TIME RECORD (3-8)

Year	Round	Result
2015	Quarterfinals	ULM 77, USA 59
	Semifinals	Ga. Southern 44, ULM 43
2014	First Round	UTA 68, ULM 65
2013	First Round	WKU 74, ULM 60
2011	First Round	WKU 66, ULM 50
2010	First Round	ULM 76, UL-L 75
	Quarterfinals	N. Texas 69, ULM 66
2009	First Round	Denver 66, ULM 57
2008	First Round	Mid. Tenn. 74, ULM 69
2007	First Round	ULM 83, Denver 67
	Quarterfinals	N. Texas 77, ULM 71



ULM Warhawks Men's Basketball

University of Louisiana at Monroe



The Last Time ULM...

Scored 100 or more points
 Scored 90 or more points
 Scored 80 or more points
 Scored fewer than 40 points
 Held an opponent to under 50 points
 Held an opponent to under 40 points
 Won by 30 or more points
 Won by 40 or more points
 Won by 50 or more points
 Won by 60 or more points
 Had four double-digit scorers
 Had five double-digit scorers
 Had no double-digit scorers
 Had 20 or more assists
 Had fewer than 10 assists
 Had 10 or more blocks
 Had 10 or more steals
 Had 25 or more turnovers
 Had fewer than 10 turnovers
 Made 30 or more field goals
 Made 40 or more field goals
 Made 50 or more field goals
 Shot over 60 pct from field
 Shot less than 20 pct from field
 Made 10 or more 3-pointers
 Made 15 or more 3-pointers
 Shot over 50 pct from 3FG
 Shot over 60 pct from 3FG
 Shot less than 20 pct from 3FG
 Made 20 or more free throws
 Made 30 or more free throws
 Shot 80-90 pct free throws
 Shot over 90 pct free throws
 Won on a buzzer beater
 Lost on a buzzer beater
 Won on the last possession
 Lost on the last possession
 Won in overtime
 Won in double overtime
 Won in triple overtime
 Had two double-doubles in one game
 Had two 20+ scorers in one game

106, vs. Champion Baptist (11/17/14)
 106, vs. Champion Baptist (11/17/14)
 82, vs. Northwestern State (12/9/14)
 36, vs. Texas State (1/11/2014)
 44, Georgia Southern (3/14/15)
 39, vs. Champion Baptist (11/17/14)
 67, vs. Champion Baptist (11/17/14)
 67, vs. Champion Baptist (11/17/14)
 67, vs. Champion Baptist (11/17/14)
 67, vs. Champion Baptist (11/17/14)
 4, vs. South Alabama (3/13/15)
 5, vs. UALR (1/17/15)
 at Georgia State (12/30/14)
 20, vs. Northwestern State (12/9/14)
 8, vs. Georgia Southern (3/14/15)
 10, vs. Champion Baptist (11/17/14)
 12, vs. Louisiana College (12/6/14)
 29, at Northwestern State (11/21/13)
 7, vs. South Alabama (3/13/15)
 32, vs. South Alabama (3/13/15)
 41, vs. Champion Baptist (11/17/14)
 51, vs. Georgia Southern (2/8/79)
 .620 (31-50), at Nicholls State (11/28/11)
 .185 (10-54) at No. 3 Ohio State (12/27/13)
 10, at Georgia Southern (2/7/15)
 15, vs. Middle Tennessee (1/24/08)
 .509 (27-53), vs. Appalachian State (2/14/15)
 .643 (9-14), at Troy (1/16/14)
 .133 (2-15), vs. Georgia State (3/5/15)
 24, vs. UL-Lafayette (1/4/14)
 30, vs. Troy (12/31/09)
 .833 (5-6), at Arkansas State (2/21/15)
 .909 (10-11), vs. Georgia Southern (3/14/15)
 W, 60-58, vs. SFA (Malcolm Thomas Jumper) (11/25/08)
 L, 76-73, at La. Tech (Kyle Gibson 3FG) (12/2/09)
 W, 66-65, at UALR (Pair of defensive stands) (3/10/14)
 L, 70-68, at Arkansas State (Frederic Dure lay-up, 5.6 secs) (2/21/15)
 W, 71-68 (OT), at Georgia Southern (2/7/15)
 W, 103-98 (2OT), vs. UL-Lafayette (1/4/2014)
 W, 107-106 (3OT), at La. Tech (1/5/1970)
 Majok Deng & DeMondre Harvey, vs. South Alabama (3/13/15)
 Tylor Ongwae & Majok Deng (21 apiece), at UALR (2/5/15)

A ULM Player...

Had a double-double (pts-rbs)
 Had a double-double (pts-asts)
 Had a triple-double
 Had 20 points or more
 Had 30 points or more
 Had 40 points or more
 Had 50 points or more
 Made 10 or more field goals
 Made 15 or more field goals
 Made five or more 3FG
 Made 10 or more FT
 Had 10 or more rebounds
 Had 15 or more rebounds
 Had 20 or more rebounds
 Had 25 or more rebounds
 Had 30 or more rebounds
 Had 10 or more assists
 Had 15 or more assists
 Had five or more steals
 Had 10 or more steals
 Had five or more blocks
 Had 10 or more blocks
 Played 40 minutes or more

Majok Deng & DeMondre Harvey, vs. South Alabama (3/13/15)
 Nick Coppola (12 pts, 12 asts), vs. Louisiana College (12/6/14)
 Wojciech Myrda (11 pts, 10 rebs, 10 blks), vs. SHSU (1/24/02)
 Tylor Ongwae (26), vs. Eastern Michigan (3/18/15)
 Amos Olatayo (30), at Northwestern State (11/21/13)
 Henry Steele (40), vs. Louisiana College (1/23/71)
 Glynn Saulters (51), vs. Nicholls State (1/1/68)
 Tylor Ongwae (10), vs. Central Baptist (12/16/14)
 Mike Smith (15), vs. Houston (12/15/99)
 Nick Coppola (5), at Arkansas State (2/21/15)
 Tylor Ongwae (10-11), vs. South Alabama (1/31/15)
 Majok Deng (14) & DeMondre Harvey (10), vs. S. Alabama (3/13/15)
 DeMondre Harvey (15), vs. Georgia State (3/5/15)
 DeAndre Alexander (20), vs. Lamar (3/2/05)
 Calvin Natt (25), vs. Miss. State (12/5/78)
 Calvin Natt (31) vs. Georgia Southern (12/29/76)
 Nick Coppola (12), vs. Louisiana College (12/6/14)
 Jayon James (15), at FIU (2/2/13)
 Tylor Ongwae (5), vs. UALR (2/15/14)
 Arthur Hayes (10), vs. McNeese State (1983)
 Jayon James (5), vs. UALR (2/15/14)
 Wojciech Myrda (13), vs. UTSA (3/2/02)
 Tylor Ongwae (40), vs. Eastern Michigan (3/18/15)

MISCELLANEOUS STATS 2014-15

Largest halftime lead

35 (53-18), vs. Champion Baptist (11/17/14)

Largest halftime deficit

15 (34-19), at Appalachian St. (2/28/15)

Largest halftime lead surrendered in a loss

3, vs. Georgia State (two times)

Largest halftime deficit overcome in a win

10 (31-21), at Troy (1/29/15)

Largest lead any time

67 (106-39), vs. Champion Baptist (11/17/14)

Largest deficit any time

23, (66-43), at Appalachian St. (2/28/15)

Largest lead surrendered in a loss

12, at No. 8 Florida (11/21/14)

Largest deficit overcome in a win

13, two times (at UTA/at Troy)

Most points scored in a half

53, vs. Champion Baptist (11/17/14)

Fewest points scored in a half

19, three times

Most points allowed in a half

44, two times (vs. NSU/LSUA)

Fewest points allowed in a half

18, two times (vs. Ch. Bapt/vs. USA)

Largest Rebounding Advantage

+27 (48-21), vs. Champion Baptist (11/17/14)

Largest Rebounding Disadvantage

-13 (49-36), at No. 8 Florida (11/21/14)

Highest Plus Turnover Differential

+13 (24-11), vs. Champion Baptist (11/17/14)

Highest Minus Turnover Differential

-11 (15-4), vs. NSU (12/9/14)

Most 3FG Made In a Game

10, at Georgia Southern (2/7/15)

Most 3FG Allowed in a Game

10, vs. NSU (12/9/14)



ULM Warhawks Men's Basketball

University of Louisiana at Monroe



2014-15 ULM MEN'S BASKETBALL

ULM Combined Team Statistics (as of Mar 07, 2015)

Conference games

Conference Stats

RECORD:	OVERALL	HOME	AWAY	NEUTRAL
ALL GAMES	14-6	7-3	7-3	0-0
CONFERENCE	14-6	7-3	7-3	0-0
NON-CONFERENCE	0-0	0-0	0-0	0-0

#	Player	gp-gs	min	avg	Total		3-Point		F-Throw		Rebounds				pf	dq	a	to	blk	stl	pts	avg
					fg-fga	fg%	3fg-fga	3fg%	ft-fa	ft%	off	def	tot	avg								
12	Ongwae, Tylor	20-20	729	36.5	90-237	.380	13-52	.250	61-71	.859	46	94	140	7.0	40	1	55	53	7	23	254	12.7
13	Deng, Majok	20-19	628	31.4	80-175	.457	25-68	.368	37-50	.740	41	97	138	6.9	51	2	24	30	23	10	222	11.1
00	Williams, Marvin	11-10	296	26.9	50-81	.617	0-0	.000	20-29	.690	23	42	65	5.9	25	1	7	24	9	5	120	10.9
32	Roberson, Justin	20-10	536	26.8	67-177	.379	3-22	.136	43-60	.717	24	47	71	3.6	52	3	53	31	6	19	180	9.0
11	Coppola, Nick	20-20	745	37.2	61-155	.394	27-76	.355	26-34	.765	3	67	70	3.5	36	0	72	38	0	16	175	8.8
05	Samuel, Jamaal	20-10	335	16.8	49-122	.402	14-51	.275	0-5	.000	10	51	61	3.1	29	2	8	14	18	4	112	5.6
04	Foster, Mack	20-8	409	20.5	41-106	.387	14-51	.275	13-22	.591	10	33	43	2.2	33	1	14	18	2	9	109	5.5
02	Harvey, DeMondre	20-1	262	13.1	21-35	.600	0-0	.000	13-24	.542	25	37	62	3.1	21	0	8	7	4	4	55	2.8
03	Cooper, Prince	10-0	53	5.3	5-6	.833	0-0	.000	0-5	.000	2	5	7	0.7	5	0	4	4	0	2	10	1.0
22	Richard, Lance	8-0	22	2.8	2-8	.250	2-7	.286	0-0	.000	1	2	3	0.4	1	0	0	1	0	0	6	0.8
20	Amajoyi, Chinedu	11-2	60	5.5	1-5	.200	1-5	.200	2-2	1.000	0	5	5	0.5	3	0	4	1	0	1	5	0.5
Team											27	27	54					4				
Total.....		20	4075		467-1107	.422	99-332	.298	215-302	.712	212	507	719	36.0	296	10	249	225	69	93	1248	62.4
Opponents.....		20	4077		426-1091	.390	118-386	.306	229-328	.698	199	476	675	33.8	291	-	214	219	59	98	1199	60.0

TEAM STATISTICS	ULM	OPP	Date	Opponent	Score	Att.
SCORING	1248	1199	* 12/30/14	at Georgia State	L 45-65	1371
Points per game	62.4	60.0	* 01/05/15	ARKANSAS STATE	W 70-61	1418
Scoring margin	+2.5	-	* 1/8/15	at UTA	Wot 76-73	1074
FIELD GOALS-ATT	467-1107	426-1091	* 1/10/15	at Texas State	W 62-59	1612
Field goal pct	.422	.390	* 01/15/15	TROY	W 63-54	1676
3 POINT FG-ATT	99-332	118-386	* 01/17/15	UALR	W 64-52	1793
3-point FG pct	.298	.306	* 1/19/15	at UL-Lafayette	W 57-55	4213
3-pt FG made per game	5.0	5.9	* 01/22/15	UTA	L 57-61	1571
FREE THROWS-ATT	215-302	229-328	* 01/24/15	GEORGIA SOUTHERN	L 53-57	2898
Free throw pct	.712	.698	* 01/29/15	at TROY	Wot 58-55	2289
F-Throws made per game	10.8	11.5	* 01/31/15	SOUTH ALABAMA	W 67-61	1878
REBOUNDS	719	675	* 2/5/15	at UALR	W 77-61	1676
Rebounds per game	36.0	33.8	* 02/07/15	at GEORGIA SOUTHERN	Wot 71-68	2427
Rebounding margin	+2.2	-	* 02/12/15	UL-LAFAYETTE	W 67-55	3502
ASSISTS	249	214	* 02/14/15	APPALACHIAN STATE	W 69-58	1388
Assists per game	12.5	10.7	* 2/21/15	at ARKANSAS STATE	L 68-70	1916
TURNOVERS	225	219	* 02/26/15	at SOUTH ALABAMA	W 75-57	1834
Turnovers per game	11.3	11.0	* 2/28/15	at APPALACHIAN STATE	L 43-66	1941
Turnover margin	-0.3	-	* 02/05/15	GEORGIA STATE	L 50-58	2871
Assist/turnover ratio	1.1	1.0	* 03/07/15	TEXAS STATE	W 56-53	1849
STEALS	93	98				
Steals per game	4.7	4.9				
BLOCKS	69	59				
Blocks per game	3.5	3.0				
ATTENDANCE	20844	20353				
Home games-Avg/Game	10-2084	10-2035				
Neutral site-Avg/Game	-	0-0				

* = Conference game

Score by Periods	1st	2nd	OT	Totals
ULM	586	636	26	1248
Opponents	547	635	17	1199



ULM Warhawks Men's Basketball

University of Louisiana at Monroe



ULM - TEAM GAME HIGHS

POINTS	106	CHAMPION BAPTIST (11/17/14)
	83	LOUISIANA COLLEGE (12/6/14)
	82	NORTHWESTERN STATE (12/09/14)
	78	CENTRAL BAPTIST (12/16/14)
	77	vs SOUTH ALABAMA (03/13/15)
	77	at UALR (2/5/15)
FIELD GOALS MADE	41	CHAMPION BAPTIST (11/17/14)
	35	LOUISIANA COLLEGE (12/6/14)
FIELD GOAL ATTEMPTS	77	vs SOUTH ALABAMA (03/13/15)
	70	at UTA (1/8/15)
FIELD GOAL PERCENTAGE	.594 (41-69)	CHAMPION BAPTIST (11/17/14)
	.577 (30-52)	at UALR (2/5/15)
3 PT FIELD GOALS MADE	10	at GEORGIA SOUTHERN (02/07/15)
	9	vs SOUTH ALABAMA (03/13/15)
	9	at ARKANSAS STATE (2/21/15)
	9	at UTA (1/8/15)
	9	at Florida (11/21/14)
	9	CHAMPION BAPTIST (11/17/14)
3 PT FG ATTEMPTS	31	at UTA (1/8/15)
	26	at TROY (01/29/15)
3 PT FG PERCENTAGE	.600 (6-10)	at Samford (12/21/14)
	.526 (10-19)	at GEORGIA SOUTHERN (02/07/15)
FREE THROWS MADE	19	UALR (01/17/15)
	17	LSUA (12/19/14)
	17	NORTHWESTERN STATE (12/09/14)
FREE THROW ATTEMPTS	30	UALR (01/17/15)
	24	CHAMPION BAPTIST (11/17/14)
FREE THROW PERCENTAGE	.938 (15-16)	SOUTH ALABAMA (01/31/15)
	.923 (12-13)	at UALR (2/5/15)
REBOUNDS	48	vs SOUTH ALABAMA (03/13/15)
	48	CHAMPION BAPTIST (11/17/14)
ASSISTS	21	LOUISIANA COLLEGE (12/6/14)
	21	CHAMPION BAPTIST (11/17/14)
STEALS	14	CHAMPION BAPTIST (11/17/14)
	12	LOUISIANA COLLEGE (12/6/14)
BLOCKED SHOTS	10	CHAMPION BAPTIST (11/17/14)
	8	NORTHWESTERN STATE (12/09/14)
TURNOVERS	20	LOUISIANA COLLEGE (12/6/14)
	18	at Texas State (1/10/15)
FOULS	24	at UTA (1/8/15)

ULM Career Double-Doubles

Taylor Ongwae (7)

27 pts, 11 rebs vs. UL-L (1/4/14)
 27 pts, 10 rebs vs. Ga. State (1/25/14)
 16 pts, 11 rebs at UL-L (2/1/14)
 19 pts, 10 rebs vs. NSU (12/9/14)*
 15 pts, 10 rebs vs. Troy (1/15/15)*
 17 pts, 10 rebs vs. Ga. So. (1/14/15)*
 16 pts, 13 rebs vs. USA (1/31/15)*

Majok Deng (6)

14 pts, 10 rebs vs. C. Car (11/26/14)*
 14 pts, 11 rebs vs. La. Col (12/6/14)*
 11 pts, 11 rebs vs. Cen Bap (12/16/14)*
 14 pts, 15 rebs vs. UALR (1/17/15)*
 14 pts, 13 rebs at USA (2/26/15)*
 12 pts, 14 rebs vs. USA (3/13/15)*

13 pts, 15 rebs, vs. GSU (3/5/15)*
 11 pts, 10 rebs vs. USA (3/13/15)*

Marvin Williams (3)

13 pts, 11 rebs at NSU (11/21/13)
 11 pts, 13 rebs at ASU (3/6/14)
 22 pts, 13 rebs at UTA (1/8/15)*

DeMondre Harvey (3)

12 pts, 10 rebs, vs. NSU (12/9/14)*

Nick Coppola (1)

12 pts, 12 asts vs. La. Col (12/6/14)*

* indicates this season



ULM Warhawks Men's Basketball

University of Louisiana at Monroe



Opponent - GAME HIGHS

POINTS	74	NORTHWESTERN STATE (12/09/14)
	73	at UTA (1/8/15)
	71	LSUA (12/19/14)
	71	vs Robert Morris (11/27/14)
	70	at ARKANSAS STATE (2/21/15)
FIELD GOALS MADE	29	at ARKANSAS STATE (2/21/15)
	27	LSUA (12/19/14)
FIELD GOAL ATTEMPTS	72	NORTHWESTERN STATE (12/09/14)
	65	LSUA (12/19/14)
FIELD GOAL PERCENTAGE	.490 (24-49)	at APPALACHIAN STATE (2/28/15)
	.453 (29-64)	at ARKANSAS STATE (2/21/15)
3 PT FIELD GOALS MADE	10	NORTHWESTERN STATE (12/09/14)
	9	GEORGIA STATE (02/05/15)
	9	at GEORGIA SOUTHERN (02/07/15)
	9	GEORGIA SOUTHERN (01/24/15)
	9	LSUA (12/19/14)
3 PT FG ATTEMPTS	33	NORTHWESTERN STATE (12/09/14)
	26	at GEORGIA SOUTHERN (02/07/15)
	26	UTA (01/22/15)
	26	LSUA (12/19/14)
3 PT FG PERCENTAGE	.500 (8-16)	TROY (01/15/15)
	.462 (6-13)	vs Robert Morris (11/27/14)
FREE THROWS MADE	24	at Florida (11/21/14)
	23	at UTA (1/8/15)
FREE THROW ATTEMPTS	37	at UTA (1/8/15)
	32	at Florida (11/21/14)
FREE THROW PERCENTAGE	.944 (17-18)	at UL-Lafayette (1/19/15)
	.933 (14-15)	EASTERN MICHIGAN (03/18/15)
REBOUNDS	49	at Florida (11/21/14)
	45	at New Mexico (12/13/14)
ASSISTS	18	at Georgia State (12/30/14)
	16	at Samford (12/21/14)
	16	NORTHWESTERN STATE (12/09/14)
STEALS	12	vs Robert Morris (11/27/14)
	11	EASTERN MICHIGAN (03/18/15)
BLOCKED SHOTS	7	SOUTH ALABAMA (01/31/15)
	7	at New Mexico (12/13/14)
	7	at UAB (11/15/14)
TURNOVERS	24	CHAMPION BAPTIST (11/17/14)
	23	LOUISIANA COLLEGE (12/6/14)
FOULS	22	UALR (01/17/15)
	19	EASTERN MICHIGAN (03/18/15)
	19	LSUA (12/19/14)



ULM Warhawks Men's Basketball

University of Louisiana at Monroe



0 Marvin Williams

Senior | Center | 6-8 | 245
Memphis, Tenn. | NW Florida State College

	Season-High	Career-High
Pts	22, two times	22, two times
FG	9, two times	9, two times
3FG	1, at Florida (11/22/14)	1, two times
FT	6, at UTA (1/8/15)	6, at UTA (1/8/15)
Ast	2, vs. GaSo (1/24/15)	2, four times
Reb	13, at UTA (1/8/15)	13, two times
Blocks	3, two times	4, vs. UALR (2/15/14)
Steals	2, vs. CHBC (11/17/14)	2, vs. CHBC (11/17/14)
Min	36, vs. RMU (11/27/14)	36, vs. RMU (11/27/14)



2 DeMondre Harvey

Junior | Forward | 6-7 | 210
Minden, La. | Pearl River CC

	Season-High	Career-High
Pts	13, vs. GSU (3/5/15)	13, vs. GSU (3/5/15)
FG	6, two times	6, two times
3FG	N/A	N/A
FT	5, vs. LSU (12/19/14)	5, vs. LSU (12/19/14)
Ast	3, vs. ASU (1/5/15)	3, vs. ASU (1/5/15)
Reb	15, vs. GSU (3/5/15)	15, vs. GSU (3/5/15)
Blocks	3, vs. CHBC (11/17/14)	3, vs. CHBC (11/17/14)
Steals	1, six times	3, vs. ASU (3/1/14)
Min	33, vs. GSU (3/5/15)	33, vs. GSU (3/5/15)

Opp	GS	Min	FG-FGA/Pct.	3FG-FGA	FT-FTA/PCT	O-D-T	PF-FO	A	TO	Blk	Stl	Pts/Avg
UAB	*	16	1-5/.200	0-1/.000	1-1/1.000	0-0-0	3-0	0	0	0	1	3/3.0
CH BAP	*	18	3-3/1.000	0-0/.000	5-8/.625	1-3-4	2-0	1	1	0	2	11/7.0
Florida	*	27	3-11/.273	1-1/1.000	0-0/.000	3-1-4	2-0	0	1	2	0	7/7.0
C. Car	*	6	0-1/.000	0-1/.000	0-0/.000	0-2-2	4-0	0	2	0	0	0/5.3
RMU	*	36	6-11/.545	0-0/.000	2-5/.400	2-3-5	3-0	1	1	3	1	14/7.0
La. Col	*	10	1-1/1.000	0-0/.000	0-0/.000	0-3-3	1-0	0	1	0	0	2/6.2
NSU	*	9	1-1/1.000	0-0/.000	0-0/.000	0-2-2	2-0	0	2	1	0	2/5.6
N.M.	*	18	2-4/.500	0-0/.000	2-2/1.000	3-2-5	2-0	0	2	2	0	6/5.6
CE BAP				DNP								
LSU-A	*	22	4-7/.571	0-0/.000	2-6/.333	2-2-4	1-0	0	0	2	0	10/6.1
Samford	*	16	2-4/.500	0-0/.000	0-0/.000	2-2-4	4-0	1	1	0	0	4/5.9
Ga. St.	*	17	1-3/.333	0-0/.000	5-6/.833	2-4-6	2-0	1	3	0	0	7/6.0
Ark. St.	*	33	9-12/.750	0-0/.000	4-5/.800	3-4-7	1-0	1	2	0	0	22/7.3
UTA	*	32	8-12/.667	0-0/.000	6-6/1.000	6-7-13	2-0	0	2	2	0	22/8.5
TXST	*	31	9-9/1.000	0-0/.000	0-0/.000	3-3-6	2-0	1	5	0	0	18/9.1
Troy	*	24	4-7/.571	0-0/.000	0-0/.000	1-5-6	3-0	0	3	3	0	8/9.1
UALR	*	23	5-8/.625	0-0/.000	0-2/.000	1-3-4	5-1	0	2	1	0	10/9.1
UL-L	*	31	3-8/.375	0-0/.000	0-3/.000	3-4-7	4-0	0	2	1	2	6/8.9
UTA	*	28	6-6/1.000	0-0/.000	5-6/.833	2-6-8	0-0	0	0	1	1	17/9.4
Ga. So.	*	35	1-4/.250	0-0/.000	0-1/.000	1-0-1	2-0	2	3	0	1	2/9.0
Troy	*	19	2-5/.400	0-0/.000	0-0/.000	0-3-3	1-0	1	1	0	0	4/8.8
USA	*	23	2-7/.286	0-0/.000	0-0/.000	1-3-4	3-0	1	1	1	1	4/8.5
UALR				DNP								
Ga. So.				DNP								
UL-L				DNP								
App. St.				DNP								
Ark. St.				DNP								
USA				DNP								
App. St.				DNP								
Ga. St.				DNP								
TXST				DNP								
#USA				DNP								
#Ga. So.				DNP								
%EMU				DNP								
%MERC				DNP								
Totals	16	474	73-129/.566	1-3/.333	32-51/.627	36-62-98	49-1	10	35	19	9	179/8.5

Opp	GS	Min	FG-FGA/Pct.	3FG-FGA	FT-FTA/PCT	O-D-T	PF-FO	A	TO	Blk	Stl	Pts/Avg
UAB		22	2-7/.286	0-0/.000	1-2/.500	3-2-5	0-0	0	1	0	0	5/5.0
CH BAP		21	2-3/.667	0-0/.000	2-3/.667	6-3-9	1-0	0	1	3	0	9/7.0
Florida		6	0-0/.000	0-0/.000	0-0/.000	0-0-0	1-0	0	0	0	0	0/4.7
C. Car		15	0-1/.000	0-0/.000	0-0/.000	1-0-1	1-0	0	0	0	0	0/3.5
RMU		1	0-0/.000	0-0/.000	0-0/.000	0-0-0	0-0	0	0	0	0	0/2.2
La. Col	*	30	4-7/.571	0-0/.000	0-0/.000	2-7-9	1-0	2	3	1	1	8/3.2
NSU	*	30	6-6/1.000	0-0/.000	0-0/.000	1-9-10	1-0	1	2	2	0	12/4.4
N.M.		10	0-0/.000	0-0/.000	0-0/.000	1-0-1	3-0	1	1	1	0	0/3.9
CE BAP		25	4-7/.571	0-0/.000	0-0/.000	4-4-8	3-0	0	0	0	0	8/4.3
LSU-A	*	16	1-1/1.000	0-0/.000	5-5/1.000	0-2-2	0-0	0	1	0	1	7/4.6
Samford	*	14	3-4/.750	0-0/.000	0-3/.000	2-1-3	1-0	0	0	0	0	6/4.7
Ga. St.	*	20	1-4/.250	0-0/.000	1-2/.500	2-2-4	1-0	0	0	0	0	3/4.6
Ark. St.		13	2-2/1.000	0-0/.000	0-1/.000	1-3-4	2-0	3	1	0	0	4/4.5
UTA		7	1-2/.500	0-0/.000	0-0/.000	0-1-1	1-0	0	1	0	1	2/4.4
TXST		9	0-1/.000	0-0/.000	0-0/.000	1-0-1	2-0	1	0	1	0	0/4.1
Troy		16	1-1/1.000	0-0/.000	0-0/.000	0-1-1	0-0	1	0	0	1	2/3.9
UALR		14	0-0/.000	0-0/.000	0-2/.000	0-0-0	2-0	0	0	0	0	0/3.7
UL-L		3	0-0/.000	0-0/.000	0-0/.000	0-0-0	1-0	0	0	0	0	0/3.5
UTA		5	0-0/.000	0-0/.000	4-5/.800	1-0-1	0-0	0	0	0	0	4/3.5
Ga. So.		4	0-0/.000	0-0/.000	0-0/.000	0-0-0	1-0	0	1	0	0	0/3.4
Troy		5	0-0/.000	0-0/.000	0-0/.000	1-3-4	0-0	0	0	0	0	0/3.2
USA		8	0-3/.000	0-0/.000	0-0/.000	2-1-3	0-0	0	0	0	0	0/3.0
UALR		4	0-0/.000	0-0/.000	0-0/.000	0-0-0	0-0	0	0	0	0	0/2.9
Ga. So.		19	2-4/.500	0-0/.000	0-0/.000	1-4-5	2-0	0	1	0	0	4/3.0
UL-L		9	0-0/.000	0-0/.000	0-0/.000	0-0-0	0-0	0	1	1	0	0/2.8
App. St.		26	2-4/.500	0-0/.000	3-6/.500	2-6-8	2-0	1	1	1	0	7/3.0
Ark. St.		15	1-3/.333	0-0/.000	1-1/1.000	2-2-4	1-0	1	0	0	0	3/3.0
USA		25	3-3/1.000	0-0/.000	3-4/.750	3-3-6	3-0	0	1	0	1	9/3.2
App. St.		17	1-1/1.000	0-0/.000	0-1/.000	0-2-2	0-0	1	0	1	0	2/3.2
Ga. St.		33	6-6/1.000	0-0/.000	1-2/.500	8-7-15	1-0	0	0	0	1	13/3.5
TXST		10	1-1/1.000	0-0/.000	0-0/.000	1-2-3	2-0	0	0	0	0	2/3.5
#USA		25	5-7/.714	0-0/.000	1-2/.000	6-4-10	2-0	1	0	1	0	11/3.7
#Ga. So.		14	0-1/.000	0-0/.000	1-2/.000	1-0-1	1-0	0	0	0	0	1/3.6
%EMU		14	1-1/1.000	0-0/.000	0-0/.000	2-0-2	0-0	0	1	0	0	2/3.6
%MERC												
Totals	5	505	49-80/.613	0-0/.000	23-41/.561	54-69-123	36-0	13	17	12	6	121/3.6

2014-15 (JUNIOR)

Posted a double-double with 11 points and 10 rebs in the SBC Quarterfinals against South Alabama... notched a career performance with 13 points and 15 rebounds in 33 minutes against Georgia State... registered nine points at South Alabama ... recorded seven points, eight rebounds and 26 minutes vs. Appalachian State... posted a big outing against Northwestern State with a double-double and personal bests of 12 points and 10 rebounds in the win; played 30 minutes after getting the start... also earned the start and logged 30 minutes against Louisiana College; recorded eight points and nine rebounds in the contest... solid performance of nine points, nine rebounds and three blocks in the win over Champion Baptist

2013-14 (SOPHOMORE)

Led the team in field goal percentage with a .531 mark (34-64)... registered a career-high 11 points on four made field goals against Thomas... grabbed a career-high eight rebounds at both Ole Miss and UALR... played a career-high 25 minutes at home against WKU... career-high three steals at home against Troy... recorded 13 blocks and 13 steals on the season... made four starts and played in all 27 contests... averaged 3.1 points and 3.4 rebounds per game... led the team in rebounding in four games and in blocks in six games

2014-15 (SENIOR)

Posted game-highs of 17 points and eight rebounds vs. UTA... won SBC and Co-LSWA Player of the Week on Jan. 12 after leading the team to a 3-0 record and going 26-33 (.798) FG with 20.7 ppg and 8.7 rpg... came up huge with 18 points on 9-9 shooting at Texas State... matched career-highs of 22 points and 13 rebounds in a big 76-73 overtime win over UTA and had eight of ULM's nine points in overtime and was a perfect 6-6 from the free throw line... dominating career-high performance of 22 points and nine made field goals in the win over Arkansas State and also grabbed seven rebounds... put in 10 points in a win over UALR at home... registered 14 points, six field goals made and 36 minutes in the Battle 4 Atlantis against Robert Morris... grabbed a season-high six rebounds at Georgia State... tallied 11 points on a perfect 3-for-3 from the field, grabbed four rebounds and set a career-high two steals in a win over Champion Baptist... scored 10 points with four rebounds and a pair of blocks in a victory over LSU

2013-14 (JUNIOR)

Tallied a pair of double-doubles with 13 points and 10 rebounds at Northwestern State and 11 points and 13 rebounds at Arkansas State... led the team with 23 blocks, finishing top-10 in the SBC... averaged 8.5 points and 4.8 rebounds per game... shot 48.6 percent from the field (89-183) which was top-15 in the league... grabbed 2.1 offensive rebounds per game in conference play, eighth-best in the league... posted nine double-figure scoring games on the season including a career-high 19 points at No. 5 Kansas to outscore Preseason Player of the Year Andrew Wiggins... the 13 rebounds against the Red Wolves were the most by a Warhawk in a single-game on the season... turned in 14 points and nine rebounds against UT Arlington at the SBC Championships... rejected a career-high four blocks at home against UALR



ULM Warhawks Men's Basketball

University of Louisiana at Monroe



3 Prince Cooper

Sophomore | Guard | 6-4 | 215
Freeport, Bahamas | Miami-Dade College

	Season-High	Career-High
Pts	3, vs. CHBC (11/17/14)	3, vs. CHBC (11/17/14)
FG	1, eight times	1, eight times
3FG	N/A	N/A
FT	1, vs. CHBC (11/17/14)	1, vs. CHBC (11/17/14)
Ast	3, vs. CHBC (11/17/14)	3, vs. CHBC (11/17/14)
Reb	5, vs. CHBC (11/17/14)	5, vs. CHBC (11/17/14)
Blocks	1, vs. CHBC (11/17/14)	1, vs. CHBC (11/17/14)
Steals	1, three times	1, three times
Min	24, vs. CHBC (11/17/14)	24, vs. CHBC (11/17/14)

Opp	GS	Min	FG-FGA/Pct.	3FG-FGA	FT-FTA/PCT	O-D-T	PF-FO	A	TO	Blk	Stl	Pts/Avg
UAB	5	0-1/0.000	0-0/0.000	0-0/0.000	1-0-1	0-0	0	0	0	0	0	0/0.0
CH BAP	24	1-6/1.167	0-0/0.000	1-2/5.000	2-3-5	1-0	3	2	1	1		3/1.5
Florida	6	1-2/5.000	0-0/0.000	0-0/0.000	1-3-4	0-0	0	0	0	0		2/1.7
C. Car	12	1-1/1.000	0-0/0.000	0-0/0.000	0-2-2	0-0	1	1	0	0		2/1.8
RMU	8	0-0/0.000	0-0/0.000	0-0/0.000	1-0-1	0-0	0	0	0	0		0/1.4
La. Col				DNP								
NSU				DNP								
N.M.	1	0-0/0.000	0-0/0.000	0-0/0.000	0-0-0	0-0	0	0	0	0		0/1.2
CE BAP	7	0-1/0.000	0-0/0.000	0-2/0.000	0-0-0	0-0	1	1	0	0		0/1.0
LSU-A				DNP								
Samford				DNP								
Ga. St.	18	1-2/5.000	0-0/0.000	0-2/0.000	0-1-1	0-0	2	2	0	1		2/1.1
Ark. St.	4	1-1/1.000	0-0/0.000	0-0/0.000	1-0-1	0-0	0	0	0	0		2/1.2
UTA	8	1-1/1.000	0-0/0.000	0-0/0.000	0-1-1	2-0	0	0	0	0		2/1.3
TXST	5	1-1/1.000	0-0/0.000	0-0/0.000	0-2-2	0-0	1	0	0	0		2/1.4
Troy	5	0-0/0.000	0-0/0.000	0-0/0.000	0-0-0	0-0	1	0	0	0		0/1.3
UALR				DNP								
UL-L	6	0-0/0.000	0-0/0.000	0-0/0.000	0-0-0	0-0	0	0	0	0		0/1.2
UTA	2	0-0/0.000	0-0/0.000	0-2/0.000	0-1-1	2-0	0	2	0	0		0/1.1
Ga. So.				DNP								
Troy				DNP								
USA				DNP								
UALR	1	0-0/0.000	0-0/0.000	0-0/0.000	0-0-0	0-0	0	0	0	0		0/1.0
Ga. So.				DNP								
UL-L				DNP								
App. St.				DNP								
Ark. St.				DNP								
USA	1	0-0/0.000	0-0/0.000	0-0/0.000	0-0-0	0-0	0	0	0	0		0/0.9
App. St.	3	1-1/1.000	0-0/0.000	0-1/0.000	1-0-1	1-0	0	0	0	1		2/1.0
Ga. St.				DNP								
TXST				DNP								
#USA	3	0-1/0.000	0-0/0.000	0-0/0.000	0-0-0	0-0	0	1	0	0		0/0.9
#Ga. So.				DNP								
%EMU				DNP								
%MERC				DNP								

2014-15 (SOPHOMORE)

Set nearly every career high in a win against Champion Baptist including five rebounds and three assists in 24 minutes... hit a mid-range jumpers in conference against Georgia State, Arkansas State, UT Arlington and Texas State... made a strong move to the bucket, scored and got fouled at Appalachian State

PREVIOUS SCHOOL

Played one season at Miami-Dade JC (Fla.)... averaged 10.4 points, 6.4 rebounds and 2.1 assists per game... shot an astounding 83 percent from the field... earned Dean's List honors for his achievements in the classroom

HIGH SCHOOL

Lettered in both basketball and track & field at Piney Woods HS (Miss.)... averaged 12 points, eight rebounds and three assists per game... named team captain as a senior... state champion in the triple jump (track & field)... earned academic honor roll and the highest chemistry and algebra II award... graduated top-15 in his class



4 Mack Foster

Junior | Guard | 6-2 | 185
Beulah, Miss. | East Mississippi CC

	Season-High	Career-High
Pts	15, at Troy (1/29/15)	15, at Troy (1/29/15)
FG	5, three times	5, three times
3FG	3, three times	3, three times
FT	2, five times	2, five times
Ast	3, two times	3, two times
Reb	5, vs. GSU (3/5/15)	5, vs. GSU (3/5/15)
Blocks	1, six times	1, six times
Steals	4, vs. LC (12/6/14)	4, vs. LC (12/6/14)
Min	34, vs. App (2/14/15)	34, vs. App (2/14/15)

Opp	GS	Min	FG-FGA/Pct.	3FG-FGA	FT-FTA/PCT	O-D-T	PF-FO	A	TO	Blk	Stl	Pts/Avg
UAB	7	0-2/0.000	0-2/0.000	0-0-0	0-0-0	1-0	0	0	1	0	0	0/0.0
CH BAP	24	5-9/5.556	3-6/5.000	0-0/0.000	1-1-2	2-0	3	1	1	3	13	7/5
Florida	18	1-4/2.500	1-2/5.000	0-0/0.000	0-0-0	4-0	2	0	0	3	3	5/3
C. Car	11	3-4/7.500	0-1/0.000	0-2/0.000	2-0-2	0-0	1	0	0	0	6	5/5
RMU	14	3-4/7.500	0-1/0.000	0-2/0.000	1-0-1	1-0	3	0	0	0	6	5/6
La. Col	18	3-5/6.000	0-0/0.000	2-2/1.000	0-1-1	2-0	2	0	0	4	8	6/0
NSU	14	1-6/1.667	0-1/0.000	0-0/0.000	0-0-0	1-0	1	1	0	0	2	5/4
N.M.	18	2-4/5.000	1-2/5.000	0-0/0.000	2-1-3	0-0	1	1	0	0	5	5/4
CE BAP	11	0-3/0.000	0-1/0.000	0-0/0.000	0-3-3	2-0	1	1	0	0	0	4/8
LSU-A	12	2-3/6.667	1-1/1.000	0-0/0.000	0-0-0	2-0	1	1	0	0	5	4/8
Samford	13	0-2/0.000	0-1/0.000	0-0/0.000	0-1-1	2-0	1	0	1	0	0	4/5
Ga. St.	14	2-5/4.000	1-3/3.333	2-2/1.000	0-1-1	0-0	1	0	0	0	7	4/6
Ark. St.	* 22	2-5/4.000	0-2/0.000	0-0/0.000	0-2-2	1-0	0	1	0	1	4	4/5
UTA	* 28	4-9/4.444	3-8/3.75	0-1/0.000	0-4-4	5-1	2	1	0	0	11	5/0
TXST	* 29	1-7/1.43	1-6/1.67	0-0/0.000	0-1-1	2-0	1	1	0	0	3	4/9
Troy	* 21	2-7/2.86	0-2/0.000	2-2/1.000	1-2-3	1-0	2	0	1	0	6	4/9
UALR	* 18	0-4/0.000	0-2/0.000	0-2/0.000	0-0-0	2-0	0	1	0	1	0	4/6
UL-L	* 14	2-9/2.22	0-3/0.000	2-2/1.000	1-3-4	0-0	0	2	0	1	6	4/7
UTA	* 20	2-3/6.67	1-2/5.00	0-0/0.000	0-3-3	2-0	2	1	0	1	5	4/7
Ga. So.	* 27	3-6/5.000	0-3/0.000	0-2/0.000	0-2-2	2-0	2	2	0	0	6	4/8
Troy	33	5-10/5.000	3-6/5.000	2-2/1.000	1-3-4	1-0	1	0	0	1	15	5/3
USA	20	1-3/3.33	0-1/0.000	0-0/0.000	1-1-2	2-0	0	0	0	0	2	5/1
UALR	16	0-0/0.000	0-0/0.000	0-0/0.000	0-3-3	2-0	0	2	0	0	0	4/9
Ga. So.	27	5-8/6.25	2-3/6.67	0-2/0.000	1-0-1	2-0	1	0	0	1	12	5/2
UL-L	19	1-3/3.33	0-1/0.000	2-3/6.67	0-0-0	2-0	2	1	0	1	4	5/2
App. St.	34	3-7/4.29	2-3/6.67	0-1/0.000	0-3-3	2-0	0	1	1	0	8	5/3
Ark. St.	14	3-7/4.29	0-2/0.000	1-1/1.000	0-1-1	2-0	0	3	0	1	7	5/3
USA	10	2-2/2.000	0-0/0.000	0-0/0.000	1-0-1	0-0	0	0	0	0	4	5/3
App. St.	14	0-3/0.000	0-2/0.000	0-0/0.000	0-0-0	3-0	0	2	0	0	0	5/1
Ga. St.	6	0-2/0.000	0-1/0.000	0-0/0.000	3-2-5	1-0	0	0	0	0	0	4/9
TXST	23	3-6/5.000	1-1/1.000	2-2/1.000	1-2-3	1-0	0	0	0	1	9	5/1
#USA	20	3-6/5.000	2-3/6.67	1-1/1.000	0-4-4	1-0	1	1	1	1	9	5/2
#Ga. So.	6	0-1/0.000	0-0/0.000	0-0/0.000	1-2-3	0-0	0	1	0	0	0	5/0
%EMU	13	1-2/5.000	0-1/0.000	0-0/0.000	0-0-0	1-0	1	3	0	0	0	4/9
%MERC												
Totals	8	608	65-161/404	22-73/301	16-29/552	17-46-63	52-1	31	28	6	20	166/4.9

2014-15 (JUNIOR)

Hit a pair of three-pointers and scored nine points in the SBC Quarterfinals against South Alabama... netted 12 points on five made field goals in an overtime win at Georgia Southern... drained a career-high 15 points and played a career-high 33 minutes in an overtime win at Troy... earned eight consecutive starts including at UT Arlington where he netted 11 points after a trio of three-pointers... ULM went on a six-game winning streak with him starting... became the first Warhawk to register four steals in a game on the season in the win over Louisiana College... shot 3-for-4 from the field in both games of the Battle 4 Atlantis Mainland bracket against Coastal Carolina and Robert Morris... registered a career-high 13 points and hit a trio of three-pointers in 24 minutes in a win over Champion Baptist

PREVIOUS SCHOOL

Played two seasons at East Mississippi CC and led the team to the Region 23 championship... guided the team to a No. 11 ranking in the NJCAA National Poll... averaged 7.1 points, 4.0 rebounds and 1.0 steals per game... hit a career-high six three-pointers in a game

HIGH SCHOOL

Lettered in both basketball and track & field at West Bolivar HS... named Co-MVP All-State and Best Offensive Player... earned All-Area MVP, First-Team and Best Defensive Player... guided the Eagles to the state championship... averaged 15 points, six rebounds, three steals and two blocks per game... dunked on Johnny O'Bryant III, who was drafted by the Milwaukee Bucks, his freshman year off a put-back



ULM Warhawks Men's Basketball

University of Louisiana at Monroe



5 Jamaal Samuel

Junior | Forward | 6-9 | 205
New Orleans, La. | Illinois State

	Season-High	Career-High
Pts	18, vs. CHBC (11/17/14)	18, vs. CHBC (11/17/14)
FG	8, at UALR (2/5/15)	8, at UALR (2/5/15)
3FG	3, four times	3, four times
FT	4, vs. NSU (12/9/14)	4, vs. NSU (12/9/14)
Ast	2, four times	2, five times
Reb	8, vs. EMU (3/18/15)	8, two times
Blocks	4, two times	4, three times
Steals	2, three times	2, three times
Min	33, two times	33, two times

Opp	GS	Min	FG-FGA/Pct.	3FG-FGA	FT-FTA/PCT	O-D-T	PF-FO	A	TO	Blk	Stl	Pts/Avg
UAB		17	1-4/.250	1-3/.333	0-0/.000	0-2-2	3-0	2	2	0	1	3/3.0
CH BAP		20	7-12/.583	3-6/.500	1-2/.500	1-5-6	1-0	0	2	2	0	18/10.5
Florida		22	3-10/.300	3-10/.300	0-0/.000	1-5-6	3-0	0	1	0	1	9/10.0
C. Car		23	1-4/.250	1-4/.250	0-0/.000	0-2-2	2-0	1	1	4	1	3/8.3
RMU		14	1-5/.200	1-4/.250	1-2/.500	0-5-5	2-0	1	4	0	1	4/7.4
La. Col		11	1-6/.167	0-1/.000	0-0/.000	2-0-2	2-0	0	0	1	0	2/6.5
NSU		14	4-8/.500	0-0/.000	4-5/.800	3-4-7	3-0	0	0	3	0	12/7.3
N.M.		27	2-7/.286	0-4/.000	2-2/1.000	0-2-2	0-0	0	0	0	2	6/7.1
CE BAP	*	21	1-5/.200	0-1/.000	1-2/.500	0-2-2	2-0	0	2	2	2	3/6.7
LSU-A		21	4-6/.667	0-2/.000	0-0/.000	2-3-5	1-0	1	2	1	0	8/6.8
Samford		25	5-8/.625	2-2/1.000	1-2/.500	0-6-6	4-0	0	1	1	0	13/7.4
Ga. St.	*	26	4-12/.333	1-4/.250	0-1/.000	0-5-5	0-0	2	1	0	0	9/7.5
Ark. St.		13	2-7/.286	1-4/.250	0-0/.000	0-0-0	0-0	0	0	1	0	5/7.3
UTA		12	1-8/.125	1-5/.200	0-0/.000	0-4-4	0-0	0	0	0	0	3/7.0
TXST		6	1-3/.333	0-2/.000	0-0/.000	0-1-1	2-0	0	1	0	0	2/6.7
Troy		12	2-4/.500	0-2/.000	0-0/.000	2-3-5	3-0	0	1	0	0	4/6.5
UALR		7	0-1/.000	0-1/.000	0-0/.000	0-2-2	1-0	0	1	0	0	0/6.1
UL-L		18	3-5/.600	3-4/.750	0-0/.000	0-0-0	2-0	0	1	0	1	9/6.3
UTA		13	0-3/.000	0-2/.000	0-0/.000	0-3-3	0-0	0	1	2	0	0/5.9
Ga. So.		9	3-7/.429	0-1/.000	0-0/.000	1-1-2	1-0	1	0	1	0	6/6.0
Troy		13	1-3/.333	1-3/.333	0-0/.000	1-1-2	1-0	0	0	1	0	3/5.8
USA		9	2-3/.667	0-0/.000	0-0/.000	0-0-0	0-0	0	2	0	0	4/5.7
UALR	*	33	8-13/.615	0-1/.000	0-0/.000	1-5-6	5-1	0	1	1	1	16/6.2
Ga. So.	*	28	7-11/.636	3-5/.600	0-0/.000	1-4-5	1-0	1	0	0	2	17/6.6
UL-L	*	24	2-5/.400	0-1/.000	0-0/.000	0-3-3	1-0	1	1	2	0	4/6.5
App. St.	*	18	2-5/.400	1-3/.333	0-2/.000	1-3-4	5-1	1	1	1	0	5/6.5
Ark. St.	*	23	3-8/.375	0-2/.000	0-0/.000	1-3-4	2-0	0	1	3	0	6/6.4
USA	*	16	3-8/.375	1-5/.200	0-0/.000	1-2-3	4-0	0	0	0	0	7/6.5
App. St.	*	22	3-11/.273	1-5/.200	0-0/.000	0-4-4	0-0	0	1	2	0	7/6.5
Ga. St.	*	4	0-0/.000	0-0/.000	0-0/.000	0-2-2	0-0	0	1	0	0	0/6.3
TXST	*	29	2-5/.400	1-1/1.000	0-2/.000	1-5-6	1-0	2	0	4	0	5/6.2
#USA	*	21	4-8/.500	0-2/.000	0-0/.000	2-0-2	4-0	2	0	1	0	8/6.3
%Ga. So.	*	33	5-10/.500	0-1/.000	2-2/1.000	1-5-6	3-0	1	2	1	0	12/6.5
%EMU	*	28	7-11/.636	0-0/.000	1-2/.500	3-5-8	3-0	0	0	1	0	15/6.7
%MERC												
Totals	13	604	88-215/.409	25-91/.275	12-22/.545	22-92-114	59-2	16	31	34	12	213/6.5

2014-15 (JUNIOR)

Poured in 15 points and pulled down eight rebounds in the CBI first round against EMU... put in 12 points and grabbed six rebounds in the SBC Semifinals against Georgia Southern... netted 17 points, one shy of his career-high, at Georgia Southern and hit three long-range shots... drained 16 points on a career-high eight made field goals and also grabbed six rebounds at UALR... hit a trio of long-range shots at UL-Lafayette... netted 13 points including a pair of three-pointers and pulled down six rebounds against Samford... registered 12 points and grabbed a season-high seven rebounds in the win over NSU... set career highs in points (18), field goals made (7) and three-pointers made (3) in a win over Champion Baptist... earned the start against Central Baptist and had a pair of blocks and steals... led the team with nine points at Georgia State

2013-14 (SOPHOMORE) ILLINOIS STATE

Played in 26 games with one start... ranked second on the team and No. 5 in the Missouri Valley Conference with 0.9 blocks per game... netted four points with four rebounds and three blocks in the loss at Southern Illinois (March 1)... grabbed a career-best eight rebounds and scored four points in the win over Bradley (Feb. 15)... blocked a career-best four shots and collected six rebounds in the overtime loss at Evansville (Feb. 12)... netted nine points on 3-for-4 shooting in the loss at Loyola (Feb. 9)... scored a career-high 10 points on a career-best five field goals (5-for-5) in the win over Northern Iowa (Feb. 5)... made his first-career start and scored four points during a career-high 24 minutes in the win over Drake (Feb. 1)... registered the first two blocks of his career in the win over Chicago State (Dec. 4)... scored nine points on 4-for-6 shooting with five rebounds in the loss at No. 14 VCU (Nov. 8)



11 Nick Coppola

Sophomore | Guard | 5-11 | 195
Richmond, Va. | Benedictine Prep

	Season-High	Career-High
Pts	19, at ASU (2/21/15)	19, at ASU (2/21/15)
FG	7, at ASU (2/21/15)	7, at ASU (2/21/15)
3FG	5, at ASU (2/21/15)	5, at ASU (2/21/15)
FT	4, four times	5, at KU (11/8/13)
Ast	12, vs. LC (12/6/14)	12, vs. LC (12/6/14)
Reb	8, vs. ULL (2/12/15)	8, vs. ULL (2/12/15)
Blocks	N/A	N/A
Steals	3, two times	3, two times
Min	45, two times	45, two times

Opp	GS	Min	FG-FGA/Pct.	3FG-FGA	FT-FTA/PCT	O-D-T	PF-FO	A	TO	Blk	Stl	Pts/Avg
UAB	*	33	5-8/625	3-5/600	1-2/500	0-4-4	0-0	6	2	0	1	14/14.0
CH BAP	*	12	2-2/1,000	1-1/1,000	2-4/500	0-2-2	1-0	4	0	0	1	7/10.5
Florida	*	45	3-10/300	3-5/600	2-2/1,000	0-1-1	3-0	2	1	0	1	11/10.7
C. Car	*	37	2-9/222	1-5/200	0-0/000	0-1-1	2-0	7	0	0	0	5/9.3
RMU	*	39	2-8/250	2-6/333	0-0/000	1-2-3	2-0	2	2	0	1	6/8.6
La. Col	*	31	6-9/667	0-2/000	0-2/000	0-0-0	1-0	12	4	0	3	12/9.2
NSU	*	40	4-9/444	2-5/400	3-4/750	1-4-5	3-0	6	2	0	2	13/9.7
N.M.	*	29	2-8/250	1-4/250	4-4/1,000	0-2-2	5-1	0	1	0	0	9/9.6
CE BAP	*	28	4-5/800	2-3/667	2-2/1,000	0-1-1	3-0	2	2	0	2	12/9.9
LSU-A	*	40	5-11/455	1-4/250	2-3/667	0-3-3	1-0	6	1	0	0	13/10.2
Samford	*	37	6-12/500	3-4/750	0-0/000	1-1-2	2-0	2	3	0	0	15/10.6
Ga. St.	*	29	2-4/500	2-3/667	0-0/000	0-4-4	1-0	4	1	0	2	6/10.3
Ark. St.	*	40	1-5/200	0-1/000	1-2/500	0-4-4	2-0	6	1	0	0	3/9.7
UTA	*	42	2-9/222	0-5/000	2-5/400	0-2-2	2-0	7	3	0	1	6/9.4
TXST	*	34	1-5/200	1-3/333	0-0/000	0-4-4	2-0	4	5	0	0	3/9.0
Troy	*	33	1-5/200	1-4/250	0-0/000	0-2-2	1-0	2	3	0	0	3/8.6
UALR	*	40	6-11/545	1-4/250	2-2/1,000	0-2-2	0-0	5	2	0	0	15/9.0
UL-L	*	35	3-9/333	1-4/250	0-0/000	0-4-4	1-0	1	1	0	1	7/8.9
UTA	*	34	2-6/333	1-4/250	0-0/000	0-2-2	3-0	3	3	0	2	5/8.7
Ga. So.	*	34	4-11/364	1-5/200	1-2/500	0-6-6	4-0	1	0	0	0	10/8.8
Troy	*	36	2-10/200	1-7/143	1-2/500	0-3-3	2-0	2	0	0	1	6/8.6
USA	*	37	6-9/667	1-2/500	2-2/1,000	0-1-1	1-0	3	1	0	3	15/8.9
UALR	*	40	3-6/500	1-1/1,000	4-4/1,000	1-2-3	3-0	4	3	0	1	11/9.0
Ga. So.	*	45	3-8/375	3-6/500	0-0/000	0-2-2	1-0	4	2	0	0	9/9.0
UL-L	*	40	2-4/500	2-3/667	2-3/667	0-8-8	1-0	5	0	0	0	8/9.0
App. St.	*	40	4-8/500	1-3/333	0-0/000	1-2-3	3-0	5	2	0	0	9/9.0
Ark. St.	*	40	7-10/700	5-7/714	0-0/000	0-5-5	1-0	3	3	0	2	19/9.3
USA	*	40	2-5/400	1-1/1,000	4-4/1,000	0-4-4	1-0	4	2	1	3	9/9.3
App. St.	*	33	5-12/417	2-6/333	0-0/000	1-1-2	3-0	4	4	0	0	12/9.4
Ga. St.	*	40	3-12/250	1-5/200	4-4/1,000	0-2-2	2-0	2	0	0	1	11/9.5
TXST	*	33	2-6/333	1-2/500	3-4/750	0-7-7	2-0	3	3	0	0	8/9.4
#USA	*	37	4-9/444	4-5/800	0-0/000	1-2-3	1-0	3	1	0	1	12/9.5
#Ga. So.	*	40	4-9/444	2-5/400	2-2/1,000	0-2-2	3-0	2	2	0	1	12/9.6
%EMU	*	38	1-5/200	1-4/250	0-0/000	0-4-4	1-0	5	1	0	0	3/9.4
%MERC												
Totals	34	1231	111-269/413	53-134/396	44-59/746	7-96-103	64-1	131	60	0	29	319/9.4

2014-15 (SOPHOMORE)

Has started at point guard in every game of his career... scored 12 points in both SBC Tournament games and drained four 3FGs in the SBC Quarterfinals against USA... career performance of 19 points, seven made FGs and five made 3FGs at A-State... played his second 45-minute game of the year at Ga. Southern and hit a trio of 3FGs... matched a season-high and led the team with 15 points against UALR at home... matched his season-high again against South Alabama... set his season-high with 15 points at Samford... recorded 13 points vs. LSU... tallied career-highs of 12 assists and three steals against Louisiana College and also had a double-double with 12 points... posted 12 points on four-for-five shooting against Central Baptist... registered 13 points in 40 minutes against NSU... dished out seven assists against Coastal Carolina at the Battle 4 Atlantis... netted 11 points on a trio of 3FGs, including one in the final seconds of regulation to send the game to overtime against No. 8 Florida, and played 45 minutes... registered 14 points, including a trio of 3FGs in the second half, to go along with his six assists in a win at UAB... led the team with nine points at N.M.

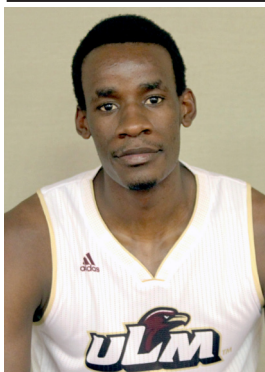
2013-14 (FRESHMAN) - 2013-14 College Sports Madness SBC Freshman of the Year

One of two players to start all 27 games for the Warhawks... led the team in minutes with 33.3 per game... played 40 minutes nine times and tied the school record of five in a row set in 1999-2000 by Maurice Bell... in conference play, ranked third in the league in minutes (36.1 mpg), seventh in three-point field goal percentage (.407) and top-10 in assists (2.9 apg)... tallied nine double-figure scoring games including a career-high 16 points at Georgia State where he hit four three-pointers... drained a career-high six field goals at UALR in the regular season finale and scored 15 points... dished out a career-high eight assists in an overtime victory at Northwestern State... pulled down a career-high six rebounds at home versus WKU... scored 10 points in the season opener at No. 5 Kansas... led the team in minutes in 34 games and assists in 10 games



ULM Warhawks Men's Basketball

University of Louisiana at Monroe



12 Tylor Ongwae

Senior | Forward | 6-7 | 205
Eldoret, Kenya | Ranger College

	Season-High	Career-High
Pts	26, vs. EMU (3/18/15)	27, two times
FG	10, two times	11, vs. ULL (1/4/14)
3FG	4, two times	4, three times
FT	10, vs. USA (1/31/15)	10, vs. USA (1/31/15)
Ast	9, vs. NSU (12/9/14)	9, vs. NSU (12/9/14)
Reb	13, vs. USA (1/31/15)	13, vs. USA (1/31/15)
Blocks	2, two times	3, vs. ULL (1/4/14)
Steals	4, at UALR (2/5/15)	5, vs. UALR (2/15/14)
Min	45, at GS (2/7/15)	46, vs. ULL (1/4/14)



13 Major Deng

Junior | Forward | 6-10 | 190
Adelaide, Australia | Indian Hills CC

	Season-High	Career-High
Pts	21, at UALR (2/5/15)	21, at UALR (2/5/15)
FG	7, two times	7, two times
3FG	3, two times	3, two times
FT	8, vs. EMU (3/18/15)	8, vs. EMU (3/18/15)
Ast	3, two times	3, two times
Reb	15, vs. UALR (1/17/15)	15, vs. UALR (1/17/15)
Blocks	4, at UAB (11/15/14)	4, at UAB (11/15/14)
Steals	2, four times	2, four times
Min	40, two times	40, two times

Opp	GS	Min	FG-FGA/Pct.	3FG-FGA	FT-FTA/PCT	O-D-T	PF-FO	A	TO	Blk	Stl	Pts/Avg
UAB	*	34	8-17/.471	0-0/.000	2-2/1.000	3-6-9	5-1	2	3	0	1	18/18.0
CH BAP	*	12	8-10/.800	0-0/.000	0-0/.000	4-1-5	0-0	0	0	1	2	16/17.0
Florida	*	39	8-14/.585	0-1/.000	3-6/.625	3-5-8	4-0	3	3	2	0	19/17.7
C. Car	*	28	3-10/.300	0-3/.000	1-1/1.000	0-4-4	1-0	2	3	0	0	7/15.0
RMU	*	32	2-6/.333	0-0/.000	3-3/1.000	3-1-4	3-0	1	2	1	1	7/13.4
La. Col	*	30	9-15/.600	0-0/.000	4-5/.800	6-3-9	2-0	1	3	0	1	22/14.8
NSU	*	39	6-8/.750	0-0/.000	7-8/.875	2-8-10	3-0	9	4	0	0	19/15.4
N.M.	*	30	2-11/.182	1-3/.333	3-4/.750	2-5-7	3-0	1	2	0	0	8/14.5
CE BAP	*	38	10-16/.625	1-3/.333	4-4/1.000	2-3-5	2-0	6	1	0	1	25/15.7
LSU-A	*	38	9-15/.600	1-2/.500	6-6/1.000	2-4-6	3-0	4	2	0	1	25/16.6
Samford	*	39	2-14/.143	0-1/.000	5-6/.833	3-3-6	2-0	4	2	0	0	9/15.9
Ga. St.	*	22	0-7/.000	0-2/.000	0-0/.000	0-0-0	3-0	2	1	0	1	0/14.6
Ark. St.	*	36	4-7/.571	0-0/.000	2-2/1.000	1-6-7	0-0	1	3	2	1	10/14.2
UTA	*	29	2-7/.286	0-1/.000	3-3/1.000	2-4-6	5-1	5	1	0	1	7/13.7
TXST	*	35	4-10/.400	0-0/.000	9-9/1.000	3-5-8	1-0	2	1	1	2	17/13.9
Troy	*	35	7-15/.467	1-5/.200	0-1/.000	5-5-10	1-0	1	1	1	0	15/14.0
UALR	*	40	4-11/.364	0-2/.000	5-5/1.000	3-6-9	3-0	3	1	1	0	13/13.9
UL-L	*	34	5-11/.455	0-0/.000	3-5/.600	1-4-5	1-0	2	1	0	2	13/13.9
UTA	*	37	4-14/.286	0-4/.250	0-0/.000	2-6-8	4-0	2	4	0	1	9/13.6
Ga. So.	*	37	4-13/.308	0-3/.000	9-10/.900	2-8-10	2-0	0	1	0	1	17/13.8
Troy	*	35	3-12/.250	0-2/.000	0-0/.000	6-3-9	3-0	5	2	0	0	6/13.4
USA	*	38	3-13/.231	0-1/.000	10-11/.909	3-10-13	0-0	4	4	0	0	16/13.5
UALR	*	36	8-13/.615	2-5/.400	3-3/1.000	1-5-6	1-0	4	5	0	4	21/13.9
Ga. So.	*	45	8-14/.571	1-4/.250	2-2/1.000	0-5-5	2-0	2	4	1	3	19/14.1
UL-L	*	40	8-15/.533	3-5/.600	2-2/1.000	2-5-7	1-0	2	4	0	1	21/14.4
App. St.	*	40	6-13/.462	0-2/.000	2-3/.667	1-6-7	2-0	7	4	1	2	14/14.3
Ark. St.	*	40	7-14/.500	4-8/.500	2-2/1.000	3-4-7	1-0	2	2	0	3	20/14.6
USA	*	39	6-13/.462	1-3/.333	1-2/.500	4-4-8	4-0	3	0	0	0	14/14.5
App. St.	*	33	3-11/.273	0-1/.000	0-0/.000	2-3-5	1-0	2	3	0	0	6/14.2
Ga. St.	*	40	2-14/.143	0-4/.000	4-7/.571	4-2-6	4-0	4	7	0	1	8/14.0
TXST	*	38	2-10/.500	0-2/.000	4-4/1.000	1-3-4	1-0	2	4	0	0	8/13.8
#USA	*	32	7-17/.412	1-2/.500	2-3/.667	2-2-4	0-0	1	0	0	0	17/13.9
#Ga. So.	*	38	0-9/.000	0-5/.000	0-0/.000	1-5-6	2-0	2	4	0	3	0/13.5
%EMU	*	40	9-17/.529	4-8/.500	4-6/.667	3-2-5	2-0	6	4	0	1	26/13.9
%MERC												
Totals	34	1198	173-416/.416	21-80/.263	105-125/.840	82-146-228	72-2	97	86	11	34	472/13.9

2014-15 (SENIOR) - Capital One Academic All-District First-Team
3x LSWA POW, 2x SBC POW, 2x CSM POW winner... seven 20+ scoring games on the year.... season-high 26 pts and four 3FGs in CBI first round... team-high 17 points in SBC Quarterfinals vs. USA... double-double with 16 points and a career-high 13 rebs vs. USA... double-double with 17 points and 10 rebs vs. Ga. Southern... double-double with 15 points and 10 rebs vs. Troy... season-high 25 points vs. Central Baptist... matched his season-high with 25 points against LSU... double-double with 19 points and 10 rebs vs. NSU and neared a triple-double with a career-high nine assists... neared a double-double with 22 points and nine rebs vs. La. College... poured in 19 points and grabbed eight rebs in an overtime thriller at No. 8 Florida and head coach Billy Donovan said he was the best player on the court... netted 18 points in a victory over UAB and neared a double-double with nine rebs

2013-14 (JUNIOR) - 2013-14 All-SBC Third-Team | 2013-14 NABC All-District Second-Team | 2013-14 All-Louisiana Third-Team | 2013-14 College Sports Madness SBC Fourth-Team... Became just the second ULM student-athlete in school history to earn All-Conference honors from the Sun Belt since joining the league... finished fourth in the league in scoring with 17.5 points per game and reached double-figures in 17 of 18 SBC contests... recorded double-digits in 24 of 27 games on the season and played at least 40 minutes three times... registered at least 20 points nine times... posted three double-doubles, with a career-high 27 points against both UL-L and Georgia State at home... led the team in scoring in 17 games... notched a career-high five steals at home vs. UALR, the most by a Warhawk in a single game on the season... played a career-high 46 minutes in the overtime win over UL-L and made a career-high 11 FG's... etched a team-high 20 points against UTA at the SBC Championships... one of two players to start all 27 games on the season... second on the team in rebounds (5.8 rpg), three-pointers made (27), blocks (19) and steals (30)... named to the NABC Honors Court for outstanding achievement in the classroom

Opp	GS	Min	FG-FGA/Pct.	3FG-FGA	FT-FTA/PCT	O-D-T	PF-FO	A	TO	Blk	Stl	Pts/Avg
UAB	*	25	5-9/.556	2-4/.500	1-2/.500	1-4-5	1-0	2	0	4	2	13/13.0
CH BAP	*	20	2-4/.500	0-2/.000	3-3/1.000	0-6-6	2-0	2	2	2	1	7/10.0
Florida	*	35	1-7/.143	1-5/.200	0-0/.000	1-8-9	2-0	1	1	0	0	3/7.7
C. Car	*	35	5-10/.500	2-6/.333	2-2/1.000	1-9-10	2-0	0	0	3	0	14/9.3
RMU	*	19	0-4/.000	0-2/.000	2-2/1.000	1-0-1	3-0	0	2	0	0	2/7.8
La. Col	*	29	5-9/.556	1-2/.500	3-6/.500	2-9-11	2-0	2	2	2	1	14/8.8
NSU	*	26	5-10/.500	1-1/1.000	3-4/.750	3-4-7	1-0	1	1	2	0	14/9.6
N.M.	*	26	3-8/.375	0-4/.000	0-0/.000	2-4-6	4-0	1	0	1	2	6/9.1
CE BAP	*	34	3-7/.429	0-0/.000	5-6/.833	4-7-11	2-0	2	3	3	1	11/9.3
LSU-A	*	21	1-2/.500	0-0/.000	0-0/.000	1-6-7	0-0	0	1	3	0	2/8.6
Samford	*	16	0-4/.000	0-1/.000	0-0/.000	0-3-3	1-0	0	0	1	0	0/7.8
Ga. St.	*	17	3-9/.333	0-2/.000	0-1/.000	4-4-8	1-0	1	1	1	0	6/7.7
Ark. St.	*	20	4-7/.571	0-2/.000	2-3/.667	1-5-6	4-0	2	3	0	1	10/7.8
UTA	*	34	6-9/.667	3-6/.500	0-0/.000	3-2-5	1-0	2	3	2	0	15/8.4
TXST	*	34	2-4/.500	2-4/.500	1-2/.500	2-6-8	2-0	2	2	3	2	7/8.3
Troy	*	28	4-10/.400	2-5/.400	6-6/1.000	1-5-6	0-0	2	0	1	1	16/8.8
UALR	*	34	4-6/.667	2-3/.667	4-8/.500	4-11-15	4-0	2	2	1	0	14/9.1
UL-L	*	28	3-7/.429	1-3/.333	1-2/.500	0-5-5	2-0	1	2	1	0	8/9.0
UTA	*	34	4-8/.500	2-5/.400	0-0/.000	0-2-2	1-0	3	1	2	1	10/9.1
Ga. So.	*	29	2-3/.667	1-2/.500	2-2/1.000	4-3-7	2-0	0	2	2	0	7/9.0
Troy	*	40	5-12/.417	3-6/.500	2-2/1.000	1-1-2	3-0	0	2	2	0	15/9.2
USA	*	31	7-12/.583	1-5/.200	2-2/1.000	1-7-8	4-0	0	0	2	0	17/9.6
UALR	*	29	7-10/.700	2-4/.500	5-6/.833	3-6-9	5-1	1	0	0	0	21/10.1
Ga. So.	*	30	1-3/.333	1-1/1.000	2-3/.667	2-4-6	4-0	0	2	0	1	5/9.9
UL-L	*	34	5-11/.455	2-4/.500	4-4/1.000	1-3-4	3-0	1	2	2	0	16/10.1
App. St.	*	24	4-9/.444	0-3/.000	5-5/1.000	0-4-4	5-1	1	0	1	0	13/10.2
Ark. St.	*	34	3-12/.250	0-4/.000	0-0/.000	3-6-9	2-0	1	1	1	0	6/10.1
USA	*	37	6-12/.500	1-1/1.000	1-2/.500	5-8-13	1-0	2	3	1	0	14/10.2
App. St.	*	35	2-8/.250	0-2/.000	0-0/.000	3-2-5	1-0	1	0	0	2	4/10.0
Ga. St.	*	40	3-12/.250	1-4/.250	0-1/.000	1-6-7	4-0	0	4	1	0	7/9.9
TXST	*	36	5-11/.455	1-2/.500	0-1/.000	2-7-9	2-0	2	0	0	2	11/9.9
#USA	*	31	5-13/.385	2-6/.333	0-0/.000	6-8-14	2-0	2	2	0	0	12/10.0
#Ga. So.	*	33	2-6/.333	2-4/.500	4-4/1.000	0-9-9	3-0	1	1	1	0	10/10.0
%EMU	*	37	3-12/.250	0-1/.000	8-11/.727	4-4-8	0-0	3	4	2	0	14/10.1
%MERC												
Totals	33	1015	120-280/.429	36-106/.343	68-90/.756	67-178-245	76-2	41	49	47	17	344/10.1

JUNIOR (2014-15)
Registered 14 points and grabbed eight rebounds in the CBI first round win over EMU... Nearing a double-double with 10 points and 9 rebounds vs. Georgia Southern in the SBC Semifinals... double-double with 12 points and 14 rebounds in SBC Quarterfinals vs. South Alabama... double-double with 14 points and 13 rebs at South Alabama... six double-doubles... career-high 21 points and also grabbed nine rebounds at UALR... put in 16 points at home vs. UL-Lafayette... etched 17 points on seven made field goals against South Alabama and also grabbed eight rebounds... registered 15 points in a career-high 40 minutes in an overtime win at Troy... grabbed a career-high 15 rebounds to go along with his 14 points and a double-double against UALR at home... netted 16 points and six free throws (6-6) vs. Troy... tallied 15 points on 6-9 shooting including a trio of three-pointers in an overtime win over UT Arlington... posted a double-double with 11 points and 11 rebounds in the win over Central Baptist... recorded 14 points, seven rebounds and two blocks and hit a big three-pointer in the end to defeat Northwestern State... tallied a double-double with 14 points and 11 rebounds in the win over Louisiana College... registered a double-double with 14 points and 10 rebounds against Coastal Carolina in the Battle 4 Atlantis... poured in 13 points, including a pair of three-pointers, in a win over UAB and also blocked four shots

PREVIOUS SCHOOL
Led Indian Hills Community College to the 2014 Regional and District Championships... guided the program to a 34-3 record in 2014 and a combined 60-7 record in his two years... hit a three-pointer against Southeastern for the win in double overtime in 2013... netted a career-high 16 points against John Wood CC



ULM Warhawks Men's Basketball

University of Louisiana at Monroe



20 Chinedu Amajoyi

Senior Guard | 6-3 | 195
Rancho Cucamonga, Calif. | Kilgore College

	Season-High	Career-High
Pts	8, vs. CHBC (11/17/14)	12, vs. USA (2/27/14)
FG	4, vs. CHBC (11/17/14)	4, vs. USA (2/27/14)
3FG	N/A	3, two times
FT	2, at GSU (12/30/14)	10, vs. ASU (1/30/14)
Ast	6, vs. CHBC (11/17/14)	6, vs. CHBC (11/17/14)
Reb	4, at UAB (11/15/14)	8, two times
Blocks	N/A	1, two times
Steals	1, at GSU (12/30/14)	2, two times
Min	19, two times	36, at ASU (3/6/14)



22 Lance Richard

R-Freshman | Guard | 5-10 | 175
Monroe, La. | Sterlington HS

	Season-High	Career-High
Pts	8, vs. CHBC (11/17/14)	8, vs. CHBC (11/17/14)
FG	3, vs. CHBC (11/17/14)	3, vs. CHBC (11/17/14)
3FG	2, vs. CHBC (11/17/14)	2, vs. CHBC (11/17/14)
FT	N/A	N/A
Ast	1, vs. USA (3/13/15)	1, vs. USA (3/13/15)
Reb	3, vs. CHBC (11/17/14)	3, vs. CHBC (11/17/14)
Blocks	1, vs. RMU (11/17/14)	1, vs. RMU (11/17/14)
Steals	1, two times	1, two times
Min	15, vs. CHBC (11/17/14)	15, vs. CHBC (11/17/14)

Opp	GS	Min	FG-FGA/Pct.	3FG-FGA	FT-FTA/PCT	O-D-T	PF-FO	A	TO	Blk	Stl	Pts/Avg
UAB		8	0-3/.000	0-1/.000	0-0/.000	1-3-4	1-0	1	2	0	0	0/0.0
CH BAP		19	4-7/.571	0-2/.000	0-0/.000	0-2-2	3-0	6	0	0	0	8/4.0
Florida					DNP							
C. Car		3	0-0/.000	0-0/.000	0-0/.000	0-0-0	0-0	0	1	0	0	0/2.7
RMU		1	0-0/.000	0-0/.000	0-0/.000	0-0-0	0-0	0	0	0	0	0/2.0
La. Col		10	0-1/.000	0-1/.000	0-0/.000	0-0-0	1-0	1	2	0	0	0/1.6
NSU					DNP							
N.M.		8	0-1/.000	0-0/.000	0-0/.000	0-1-1	0-0	1	1	0	0	0/1.3
CE BAP		2	0-2/.000	0-1/.000	0-0/.000	0-0-0	1-0	0	0	0	0	0/1.1
LSU-A					DNP							
Samford		13	0-1/.000	0-0/.000	0-0/.000	0-1-1	1-0	0	0	0	0	0/1.0
Ga. St.	*	19	0-0/.000	0-0/.000	2-2/1.000	0-0-0	0-0	1	1	0	1	2/1.1
Ark. St.					DNP							
UTA		4	0-1/.000	0-1/.000	0-0/.000	0-0-0	0-0	0	0	0	0	0/1.0
TXST					DNP							
Troy					DNP							
UALR					DNP							
UL-L		3	0-0/.000	0-0/.000	0-0/.000	0-0-0	0-0	1	0	0	0	0/0.9
UTA					DNP							
Ga. So.					DNP							
Troy		4	0-1/.000	0-1/.000	0-0/.000	0-0-0	0-0	1	0	0	0	0/0.8
USA		1	0-0/.000	0-0/.000	0-0/.000	0-0-0	0-0	0	0	0	0	0/0.8
UALR		1	0-0/.000	0-0/.000	0-0/.000	0-0-0	0-0	0	0	0	0	0/0.7
Ga. So.					DNP							
UL-L					DNP							
App. St.		3	0-0/.000	0-0/.000	0-0/.000	0-1-1	0-0	0	0	0	0	0/0.7
Ark. St.		3	0-0/.000	0-0/.000	0-0/.000	0-0-0	0-0	0	0	0	0	0/0.6
USA		1	0-0/.000	0-0/.000	0-0/.000	0-0-0	0-0	0	0	0	0	0/0.6
App. St.		14	0-1/.000	0-1/.000	0-0/.000	0-3-3	1-0	1	0	0	0	0/0.6
Ga. St.					DNP							
TXST	*	7	1-2/.500	1-2/.500	0-0/.000	0-1-1	2-0	0	0	0	0	3/0.7
#USA		4	0-1/.000	0-0/.000	0-0/.000	0-0-0	2-0	0	0	0	0	0/0.7
#Ga. So.					DNP							
%EMU					DNP							
%MERC					DNP							
Totals	2	128	5-21/.238	1-10/.100	2-2/1.000	1-12-13	12-0	13	7	0	1	13/0.7

2014-15 (SENIOR)

Scored eight points in 19 minutes in a win over Champion Baptist... seen action in 11 conference games and 20 on the year... started at Georgia State and vs. Texas State... drilled a three-pointer on ULM's first possession on Senior Day

2013-14 (JUNIOR)

Finished top-10 in the league in three-point field goal percentage at .405 (15-37)... started in 11 of ULM's last 12 games and doubled his scoring average in that span... posted career-highs of 12 points and eight rebounds against South Alabama at home... became the only ULM student-athlete to hit 10 free throws in a game on the season as he went 10-12 at home against Arkansas State... registered three double-figure scoring games... played a career-high 36 minutes at Arkansas State and pulled down eight rebounds... drained a trio of three-pointers at both Texas State and Georgia State... averaged 4.1 points per game and made 22 appearances

PREVIOUS SCHOOL

Played two seasons at Kilgore College and led the Rangers to a 27-6 overall record and an East Texas JUCO Conference Championship ... Also guided Kilgore to the quarterfinals of the 2013 National Junior College Athletic Association National Tournament and started every game ... Averaged 5.9 points, 2.7 rebounds and 1.9 assists in 33 appearances ... Tallied five double-figure scoring games including a career-high 17 points on two separate occasions ... Shot .807 percent from the free-throw line

Opp	GS	Min	FG-FGA/Pct.	3FG-FGA	FT-FTA/PCT	O-D-T	PF-FO	A	TO	Blk	Stl	Pts/Avg
UAB		1	0-0/.000	0-0/.000	0-0/.000	0-0-0	0-0	0	0	0	0	0/0.0
CH BAP		15	3-8/.375	2-7/.286	0-0/.000	0-3-3	1-0	0	1	0	1	8/4.0
Florida		1	0-0/.000	0-0/.000	0-0/.000	0-0-0	0-0	0	0	0	0	0/2.7
C. Car		1	0-2/.000	0-2/.000	0-0/.000	0-0-0	0-0	0	0	0	0	0/2.0
RMU		5	1-2/.500	1-2/.500	0-0/.000	0-0-0	2-0	0	0	1	0	3/2.2
La. Col		5	1-3/.333	1-3/.333	0-0/.000	0-0-0	0-0	0	0	0	0	3/2.3
NSU					DNP							
N.M.		1	0-1/.000	0-1/.000	0-0/.000	0-0-0	0-0	0	0	0	0	0/2.0
CE BAP		3	0-1/.000	0-1/.000	0-0/.000	0-0-0	0-0	0	0	0	1	0/1.8
LSU-A		0+	0-1/.000	0-1/.000	0-0/.000	0-0-0	0-0	0	0	0	0	0/1.6
Samford		2	0-0/.000	0-0/.000	0-0/.000	0-0-0	0-0	0	0	0	0	0/1.4
Ga. St.		5	1-2/.500	1-2/.500	0-0/.000	0-0-0	0-0	0	1	0	0	3/1.5
Ark. St.					DNP							
UTA		6	1-2/.500	1-2/.500	0-0/.000	0-1-1	1-0	0	0	0	0	3/1.7
TXST					DNP							
Troy					DNP							
UALR					DNP							
UL-L					DNP							
UTA					DNP							
Ga. So.		4	0-2/.000	0-2/.000	0-0/.000	0-1-1	0-0	0	0	0	0	0/1.5
Troy		0+	0-1/.000	0-0/.000	0-0/.000	1-0-1	0-0	0	0	0	0	0/1.4
USA					DNP							
UALR		1	0-0/.000	0-0/.000	0-0/.000	0-0-0	0-0	0	0	0	0	0/1.3
Ga. So.					DNP							
UL-L					DNP							
App. St.		1	0-0/.000	0-0/.000	0-0/.000	0-0-0	0-0	0	0	0	0	0/1.3
Ark. St.					DNP							
USA		1	0-0/.000	0-0/.000	0-0/.000	0-0-0	0-0	0	0	0	0	0/1.2
App. St.		4	0-1/.000	0-1/.000	0-0/.000	0-0-0	0-0	0	0	0	0	0/1.1
Ga. St.					DNP							
TXST					DNP							
#USA		3	0-0/.000	0-0/.000	0-0/.000	0-0-0	1-0	1	0	0	0	0/1.1
#Ga. So.					DNP							
%EMU					DNP							
%MERC					DNP							
Totals	59		7-26/.269	6-24/.250	0-0/.000	1-5-6	5-0	1	2	1	2	20/1.1

2014-15 (R-FRESHMAN)

Netted a career-high eight points and hit a pair of three-pointers in a win over Champion Baptist... hit a three-pointer in an overtime win over UT Arlington... drilled a three-pointer and also rejected a shot against Robert Morris at the Battle 4 Atlantis... seen action in seven conference games and 18 on the year... dished out an assist in the SBC Quarterfinals against South Alabama

2013-14 (FRESHMAN)

Redshirted... will still have four years of eligibility remaining

HIGH SCHOOL

Played three seasons at Sterlington High School ... Guided the Panthers to a 25-8 record as a senior and a second round appearance in the Louisiana High School Athletic Association playoffs ... Averaged 12 points and 3 assists per game his senior year ... Earned All-District honors from 2010-2013



ULM Warhawks Men's Basketball

University of Louisiana at Monroe



32 Justin Roberson

Junior | Guard | 6-1 | 185
Natchitoches, La. | Western Texas

	Season-High	Career-High
Pts	19, vs. CEBC (12/16/14)	19, vs. CEBC (12/16/14)
FG	8, vs. CEBC (12/16/14)	8, vs. CEBC (12/16/14)
3FG	1, six times	1, six times
FT	8, vs. UALR (1/17/15)	8, vs. UALR (1/17/15)
Ast	7, at UALR (2/5/15)	7, at UALR (2/5/15)
Reb	7, two times	7, two times
Blocks	2, vs. RMU (11/27/14)	2, vs. RMU (11/27/14)
Steals	4, at TXST (1/10/15)	4, at TXST (1/10/15)
Min	40, at Troy (1/29/15)	40, at Troy (1/29/15)

Opp	GS	Min	FG-FGA/Pct.	3FG-FGA	FT-FTA/PCT	O-D-T	PF-FO	A	TO	Blk	Stl	Pts/Avg
UAB	*	32	6-11/.545	0-0/.000	6-6/1.000	1-3-4	1-0	5	1	0	2	18/18.0
CH BAP	*	15	4-5/.800	0-0/.000	1-2/.500	0-1-1	1-0	2	1	0	3	9/13.5
Florida	*	26	1-6/.167	0-1/.000	0-0/.000	0-1-1	5-1	0	3	0	2	2/9.7
C. Car	*	29	4-7/.571	1-3/.333	2-2/1.000	0-7-7	2-0	2	2	0	0	11/10.0
RMU	*	31	6-10/.600	0-2/.000	0-0/.000	0-4-4	3-0	6	3	2	0	12/10.4
La. Col	*	26	5-7/.714	0-1/.000	2-2/1.000	0-3-3	4-0	1	5	0	2	12/10.7
NSU	*	28	4-6/.667	0-1/.000	0-2/.000	0-3-3	4-0	2	3	0	1	8/10.3
N.M.	*	32	3-11/.273	0-1/.000	0-1/.000	0-4-4	0-0	1	2	0	2	6/9.8
CE BAP	*	31	8-12/.667	1-2/.500	2-2/1.000	0-4-4	2-0	4	0	0	2	19/10.8
LSU-A	*	30	2-6/.333	0-0/.000	2-3/.667	0-7-7	5-1	4	2	0	0	6/10.3
Samford	*	25	1-10/.100	1-1/1.000	0-0/.000	3-3-6	0-0	2	3	0	1	3/9.6
Ga. St.		13	0-5/.000	0-1/.000	0-1/.000	0-0-0	2-0	0	0	0	0	0/8.8
Ark. St.		19	4-7/.571	0-0/.000	2-3/.667	0-1-1	2-0	1	0	0	0	10/8.9
UTA		23	2-10/.200	1-3/.333	0-0/.000	1-5-6	5-1	1	1	0	0	5/8.6
TXST		17	5-9/.556	0-1/.000	0-0/.000	0-2-2	5-1	2	3	0	4	10/8.7
Troy		26	4-9/.444	1-1/1.000	0-0/.000	0-1-1	1-0	0	0	0	1	9/8.8
UALR		24	2-6/.333	0-3/.000	8-9/.889	0-3-3	1-0	1	3	0	0	12/8.9
UL-L		28	3-7/.429	0-0/.000	2-5/.400	1-5-6	3-0	4	1	1	1	8/8.9
UTA		27	2-10/.200	3-2/.5	3-4/.750	3-2-5	2-0	3	3	0	0	7/8.8
Ga. So.		21	2-6/.333	0-3/.000	1-2/.500	1-4-5	2-0	3	1	0	0	5/8.6
Troy	*	40	2-11/.182	0-1/.000	5-6/.833	1-4-5	1-0	1	1	1	3	9/8.6
USA	*	33	4-11/.364	0-2/.000	1-1/1.000	1-3-4	5-1	6	1	1	2	9/8.6
UALR	*	39	4-10/.400	0-3/.000	0-0/.000	0-5-5	3-0	7	2	1	0	8/8.6
Ga. So.	*	31	1-4/.250	0-0/.000	3-4/.750	0-1-1	1-0	6	2	0	0	5/8.5
UL-L	*	34	5-13/.385	0-1/.000	4-6/.667	3-3-6	1-0	2	2	1	3	14/8.7
App. St.	*	14	6-7/.857	0-0/.000	1-1/1.000	1-1-2	2-0	2	0	0	0	13/8.8
Ark. St.	*	31	3-11/.273	0-0/.000	1-2/.500	2-3-5	2-0	4	1	0	1	7/8.8
USA	*	30	6-18/.333	0-0/.000	6-9/.666	5-0-5	3-0	4	2	1	3	18/9.1
App. St.	*	25	4-7/.571	1-1/1.000	1-1/1.000	1-1-2	4-0	0	2	0	1	10/9.1
Ga. St.	*	37	4-9/.444	0-1/.000	3-4/.750	4-1-5	3-0	3	1	0	0	11/9.2
TXST		24	4-7/.571	0-0/.000	2-2/1.000	0-2-2	4-0	3	5	0	0	10/9.2
#USA	*	24	4-15/.267	0-0/.000	0-0/.000	3-5-8	2-0	3	2	0	1	8/9.2
#Ga. So.	*	36	3-10/.300	1-2/.500	1-1/1.000	2-7-9	4-0	2	3	0	1	8/9.2
%EMU	*	30	3-8/.375	0-2/.000	3-3/1.000	0-7-7	3-0	3	4	0	1	9/9.1
%MERC												
Totals	23	901	118-293/.403	7-36/.194	59-81/.728	33-99-132	85-5	87	61	8	36	302/9.2

JUNIOR (2014-15)

Scored eight points in both SBC Tournament games and totaled 17 rebounds... tallied a team-high 18 points, five rebounds, four assists, three steals and a block at South Alabama... registered 13 points on 6-7 shooting vs. Appalachian State... recorded 14 points, six rebounds and three steals vs. UL-Lafayette at home... dished out a career-high seven assists at UALR... put in 12 points and drained a career-high eight free throws (8-9) vs. UALR at home... scored 10 points against both Arkansas State and Texas State... career-high 19 points and eight made field goals in the win over Central Baptist... reached double-figures with 12 points on 5-7 shooting against Louisiana College... registered a team and game-high of 18 points, including a perfect 6-6 FT, to go along with his five assists in a win over UAB... recorded a career-high three steals against Champion Baptist... netted 11 points and grabbed a career-high seven rebounds against Coastal Carolina... drained 12 points with six assists and two blocks against Robert Morris

PREVIOUS SCHOOL

Led Western Texas Junior College to a 23-8 record and averaged 14.2 points, 3.5 rebounds, 4.0 assists and 2.0 steals per game... named to the All-Western Texas Conference First-Team... memorable dunk over a 6-8 post player after driving down the lane

HIGH SCHOOL

Lettered in both basketball and football at Natchitoches Central HS and earned All-State in both sports

Individual Career Totals for Returning Student-Athletes

Only includes statistics at ULM

Points

T. Ongwae	910
N. Coppola	505
M. Williams	392
D. Harvey	205
C. Amajoyi	104

Steals

T. Ongwae	64
N. Coppola	41
M. Williams	22
D. Harvey	19
C. Amajoyi	10

Field Goals M-A

T. Ongwae	325-776
N. Coppola	176-443
M. Williams	162-312
D. Harvey	83-144
C. Amajoyi	30-90

Free Throws M-A

T. Ongwae	212-265
N. Coppola	74-104
M. Williams	66-108
D. Harvey	39-71
C. Amajoyi	28-38

Rebounds

T. Ongwae	384
M. Williams	218
D. Harvey	216
N. Coppola	174
C. Amajoyi	80

Three-Pointers M-A

N. Coppola	79-207
T. Ongwae	48-180
C. Amajoyi	16-50
M. Williams	2-8

Assists

N. Coppola	219
T. Ongwae	136
D. Harvey	27
C. Amajoyi	25
M. Williams	21

Games/Starts

T. Ongwae	61/61
N. Coppola	61/61
D. Harvey	61/9
M. Williams	46/37
C. Amajoyi	42/16

Blocks

M. Williams	42
T. Ongwae	30
D. Harvey	25
C. Amajoyi	2

Minutes

N. Coppola	2130
T. Ongwae	2061
M. Williams	1079
D. Harvey	876
C. Amajoyi	509

ULM's 2014-15 Record When it Has...

Five Double-Figure Scorers (2-0)

vs. Georgia Southern (loss)
vs. Northwestern State
vs. UALR

vs. Georgia Southern (loss)
vs. Eastern Michigan

Four Double-Figure Scorers (7-0)

at UAB
vs. Champion Baptist
vs. Louisiana College
vs. Central Baptist
vs. Arkansas State
at UALR
vs. USA

Two Double-Figure Scorers (3-9)

at No. 8 Florida
vs. Coastal Carolina
vs. Robert Morris
at Samford
vs. Troy (win)
vs. UT Arlington
vs. Georgia Southern
at Troy (win)
at Arkansas State
at Appalachian State
vs. Texas State (win)

Three Double-Figure Scorers (9-2)

vs. LSU-Alexandria
at UT Arlington
at Texas State
vs. South Alabama
at Georgia Southern
vs. UL-Lafayette
vs. Appalachian State
at South Alabama
vs. Georgia State (loss)

One Double-Figure Scorer (1-0)

at UL-Lafayette

No Double-Figure Scorers (0-2)

at New Mexico
at Georgia State



ULM Warhawks Men's Basketball

University of Louisiana at Monroe

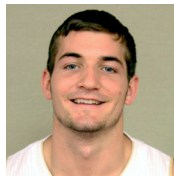


Media Roster



0 Marvin Williams

Senior | Center
6-8 | 245
Memphis, Tenn.
NW Florida State College



11 Nick Coppola

Sophomore | Guard
5-11 | 190
Richmond, Va.
Benedictine Prep



1 Alex Brown

Freshman | Guard
6-4 | 185
Vernon, Fla.
Vernon HS



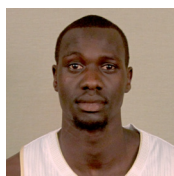
12 Tylor Ongwae

All-Conference First-Team
Senior | Forward | 6-7 | 205
Eldoret, Kenya
Ranger College



2 DeMondre Harvey

Junior | Forward
6-7 | 210
Minden, La.
Pearl River CC



13 Majok Deng

All-Conference Third-Team
Junior | Forward | 6-10 | 190
Adelaide, Australia
Indian Hills CC



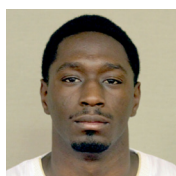
3 Prince Cooper

Sophomore | Guard
6-4 | 215
Freeport, Bahamas
Miami-Dade College



20 Chinedu Amajoyi

Senior | Guard
6-3 | 195
Rancho Cucamonga, Calif.
Kilgore College



4 Mack Foster

Junior | Guard
6-2 | 185
Beulah, Miss.
East Mississippi CC



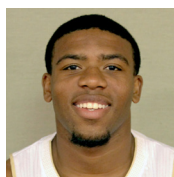
22 Lance Richard

R-Freshman | Guard
5-10 | 170
Monroe, La.
Sterlington HS



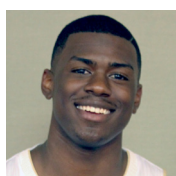
5 Jamaal Samuel

Junior | Forward
6-9 | 205
New Orleans, La.
Illinois State



32 Justin Roberson

Junior | Guard
6-1 | 185
Natchitoches, La.
Western Texas



10 Roderick Taylor

Freshman | Forward
6-8 | 210
Harker Heights, Texas
Harker Heights HS



Head Coach Keith Richard

SBC Coach of the Year
ULM '82
Fifth Year at ULM | 14th Year Overall
Baton Rouge, La.